

# Floor Outlet Boxes

2016 Guide



**TOBIN**  
ELECTRICAL COMPONENTS

Proudly  
Australian Owned

**Purpose of Product**

To locate power and data/voice outlets in the middle of open plan areas or inside full height windows in a discreet and architecturally pleasing way. Because they can be walked over, they allow the layout of a room to be more readily changed than is the case with alternative products such as surface mounted floor outlets, which can present a tripping hazard, or floor to ceiling power poles, which are visually and physically obtrusive.

**Frequently Asked Questions:**

**Are the Floor Boxes waterproof or IP rated? Can they be installed outside, in a kitchen or in a shopping centre mall?**

*No, apart from models FFBC66, FFOB-VAN12 and FFOB-VAN13 these products are not suitable for use in 'wet areas' or where high pressure water cleaning equipment is used to clean/polish floors.*

**Can you drive over them?**

*No, they are designed to take pedestrian traffic only. The round aluminium models, FFOB-560, FFOB-590 and FFOB-595 have been installed in car showrooms with the aluminium lid rebate fitted to give the lid extra strength, although this is at the discretion of the customer.*

**How do the cords come out of the box?**

*Via the cord outlet flap. These flaps allow the cords to leave the box safely with the lid closed. The flaps return to their flush position when the box is not in use.*

**Can I put GPO's in the spaces allocated for data outlets?**

*Generally not - this is because, although the GPO's themselves will fit, there is usually not enough space for the plugs to all fit in without spoiling with the other power plugs. Generally the internal layout is such that the GPO's are all located on one side of the box, and data on the other side, so that power plugs do not face each other.*

**Are they completely flush?**

*Generally not - most models are held by a flange which sits above the floor covering by a few millimetres. This flange is generally bevelled and hides the cut edge of the floor or carpet and holds the floor box up. They present no greater tripping hazard than a carpet strip edge.*

**Can they be installed before the concrete pour or should the conduits run to a foam block-out and be installed later?**

*We would recommend putting in a foam block-out for the concrete pour rather than casting the steel box body in the slab at the time of the pour. This prevents accidental damage to the boxes during the construction period from water, trolleys, scaffolding etc.*

**What if the carpet / vinyl / wood is thicker than the rebate in the lid of the floor box?**

*If they cannot be machined down to the depth of the rebate, then a lid infill piece should be installed or a different model, which caters for a thicker floor covering, should be chosen.*



**BOX****DESCRIPTION****FFOB-120****1 Auto GPO****Pop Up Floor Box – Size: 120 x 120mm**

Supplied with 1 x 10A autoswitched GPO

Finish: Silver Satin

Steel Box Size: 100 x 100 x 90mm

Suitable for use in benchtops, desks, boardroom tables and carpeted floors. May also be fitted into ceilings and walls to provide outlets which are hidden when not in use.

**FFOB-121****2 Data Mounts****Pop Up Floor Box – Size: 120 x 120mm**

Supplied with 2 x F30Z mounting clips (RJ data/tel)

Finish: Silver Satin

Steel Box Size: 100 x 100 x 90mm

Suitable for use in benchtops, desks, boardroom tables and carpeted floors. May also be fitted into ceilings and walls to provide outlets which are hidden when not in use.

**FFOB-128****2 Auto GPO's****Pop Up Floor Box – Size: 120 x 220mm**

Supplied with 2 x 10A autoswitched GPO's

Finish: Silver Satin

Steel Box Size: 200 x 100 x 90mm

Suitable for use in benchtops, desks, boardroom tables and carpeted floors. May also be fitted into ceilings and walls to provide outlets which are hidden when not in use.

**FFOB-129****2 Data Mounts, 1 Auto GPO****Pop Up Floor Box – Size: 120 x 220mm**

Supplied with 1 x 10A autoswitched GPO &amp; 2 x data mounts

Finish: Silver Satin

Steel Box Size: 200 x 100 x 90mm

Suitable for use in benchtops, desks, boardroom tables and carpeted floors. May also be fitted into ceilings and walls to provide outlets which are hidden when not in use.

**FFOB-150****1 Auto GPO****Pop Up Floor Box – Size: 120 x 120mm**

Supplied with 1 x 10A autoswitched GPO

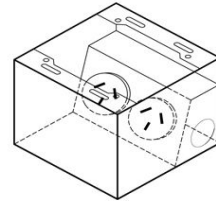
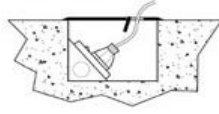
Finish: Black Cover

Steel Box Size: 100 x 100 x 90mm

Suitable for use in benchtops, desks, boardroom tables and carpeted floors. May also be fitted into ceilings and walls to provide outlets which are hidden when not in use.

**BOX****DESCRIPTION****FFOB-142****Brass Look Lid & Frame - shallow 65mm depth**

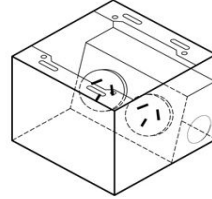
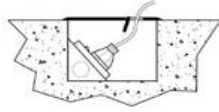
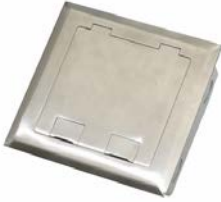
Complete with 2 x 10A autoswitched single GPO's  
 Box size – 135 x 125 x 65mm Deep  
 Bevelled Edge



2 Auto GPO

**FFOB-143****Stainless Steel Lid & Frame - shallow 65mm depth**

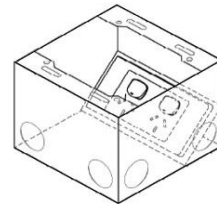
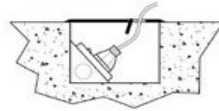
Complete with 2 x autoswitched single GPO's  
 Box size – 135 x 125 x 65mm Deep



2 Auto GPO

**FFOB-144****Brass Look Lid & Frame**

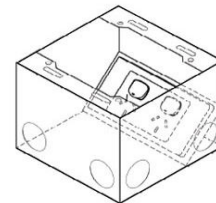
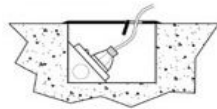
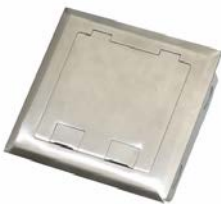
Capacity: 1 x Double GPO  
 Box size – 135 x 125 x 100mm Deep



2 GPO

**FFOB-145****Stainless Steel Lid & Frame**

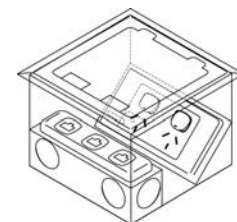
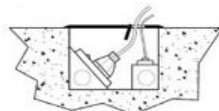
Capacity: 1 x Double GPO  
 Box size – 135 x 125 x 100mm Deep



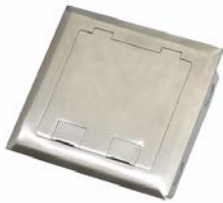
2 GPO

**FFOB-147****Brass Look Lid & Frame**

Capacity: 1 x Double GPO  
 & 1 x 3 Gang Data (plate supplied)  
 Box size – 135 x 125 x 100mm Deep



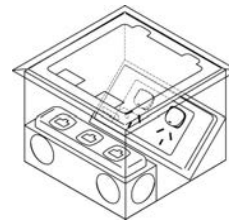
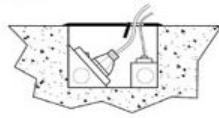
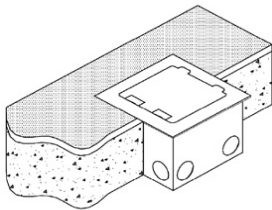
2 GPO 3 Data

**BOX****DESCRIPTION****FFOB-148**

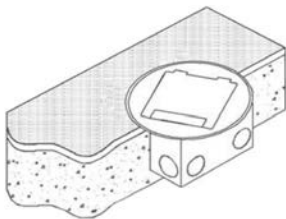
2 GPO 3 Data

**Stainless Steel Lid & Frame**

Capacity: 1 x Double GPO  
& 1 x 3 Gang Data (plate supplied)  
Box size – 135 x 125 x 100mm Deep

**FFOB-143F****FFOB-145F****FFOB-148F****Flush Fitting - Stainless Steel Lid & Frame**

The FFOB-140F Series features a solid stainless steel cover and has straight cut edges to allow the cover to be routed into a timber floor or finished flush with floor tiles. The solid stainless steel cover is useful for installations where the flooring material is not suitable for use in a rebrand cover.

**FFOB-143F** 125 x 135 x 65mm box size - complete with 2 auto GPO's**FFOB-145F** 125 x 135 x 100mm box size - capacity: 1 Double GPO**FFOB-148F** 125 x 135 x 100mm box size - capacity: 1 Double GPO and 1 x 3 Gang Data (plate supplied)**FFOB-143R****FFOB-145R****FFOB-148R****Round Lid - Stainless Steel Lid & Frame**

The FFOB-140R Series features a solid stainless steel round cover.

The round cover is ideal for installation situations where the floor box alignment is difficult.

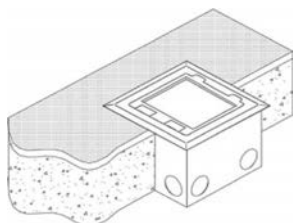
The two cord outlet ports fold into the boxes to allow cables to exit when in use

**FFOB-143R** 125 x 135 x 65mm box size - complete with 2 auto GPO's**FFOB-145R** 125 x 135 x 100mm box size - capacity: 1 Double GPO**FFOB-148R** 125 x 135 x 100mm box size - capacity: 1 Double GPO and 1 x 3 Gang Data (plate supplied)**FFOB-149****FFOB-149D****FFOB-149/2AS****Stainless Steel Lid & Frame with 20mm Rebate**

The FFOB-149 Series features a Stainless Steel lid with a 20mm rebate.

Various boxes have capacity for 2 x 10A power, 2 x 10A power plus 3 x data or 2 x 10A autoswitched power. The FFOB149/2AS is only 65mm deep.

The two cord outlet ports fold into the boxes to allow cables to exit when in use

**FFOB-149** 125 x 135 x 100mm box size - capacity: 1 Double GPO**FFOB-149D** 125 x 135 x 100mm box size - capacity: 1 Double GPO, 3 x Data**FFOB-149/2AS** 125 x 135 x 65mm box size - capacity: 2 x autoswitched GPO's**FFOB-188**

2 GPO 3 Data

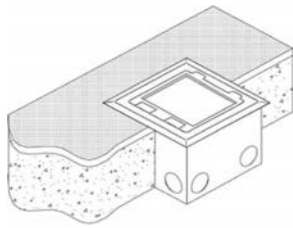
**Stainless Steel Lid with Bevelled Edges & 14mm Rebate**

The FFOB-188 features a solid stainless steel cover incorporating a 14mm rebate to accept floor coverings. The bevelled edges allow the cover to conceal the cut edge of the carpet or floor covering.

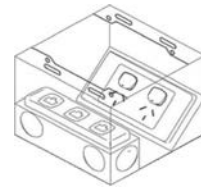
The deep lid rebate accepts a wide range of floor coverings such as deep Broadloom carpet. The two cord outlet ports fold into the box to allow cables to exit when in use.

Capacity: 1 x Double GPO &amp; 1 x 3 Gang Data (plate supplied)

Cover size: 180 x 180mm - Box size 155mm x 155mm x 100mm

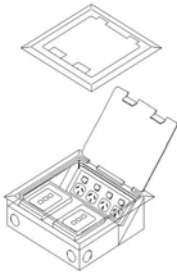
**BOX****DESCRIPTION****FFOB-188S****2 GPO 3 Data****Stainless Steel Lid with Bevelled Edges**

The FFOB-188S features a solid stainless steel cover with bevelled edges to conceal the cut edge of the carpet or floor covering below. The solid stainless steel cover is useful for installations where the flooring material is not suitable for use in a rebated cover.



Capacity: 1 x Double GPO &amp; 1 x 3 Gang Data (plate supplied)

Cover size: 180 x 180mm - Box size 155mm x 155mm x 100mm

**FFOB-245****4 GPO 12 Data****Stainless Steel lid with bevelled edges**

Capacity: 4 Gang GPO &amp; 2 x 6 Gang Data Plate

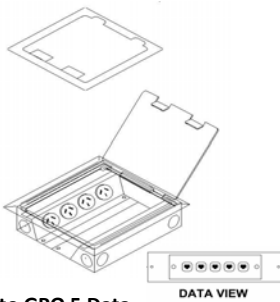
Cover Size - 245 x 245mm

Box size – 230 x 228 x 110mm Deep

Suitable for Category 6 data cabling



The cover bevels down to a fine edge and is suitable for use with carpet, polished floor boards, ceramic tiles, and vinyl floor coverings. (Not suitable for use in wet areas).

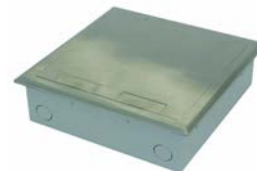
**FFOB-245/70****4 Auto GPO 5 Data****Stainless Steel lid with bevelled edges**

c/w 4 x Autoswitch GPO &amp; 5 Standard Data

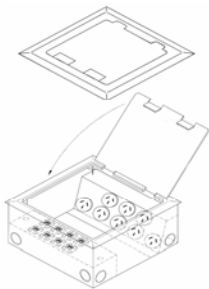
Cover Size - 245 x 245mm

Box size – 230 x 228 x 70mm Deep

Suitable for Category 6 data cabling



The cover bevels down to a fine edge and is suitable for use with carpet, polished floor boards, ceramic tiles, and vinyl floor coverings. (Not suitable for use in wet areas).

**FFOB-245/8P8D****8 Auto GPO 8 Data****Stainless Steel lid with bevelled edges**

c/w 8 x Autoswitch GPO &amp; 8 x Standard Data

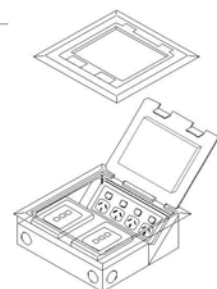
Cover Size - 245 x 245mm

Box size – 230 x 228 x 110mm Deep

Suitable for Category 6 data cabling



The cover bevels down to a fine edge and is suitable for use with carpet, polished floor boards, ceramic tiles, and vinyl floor coverings. (Not suitable for use in wet areas).

**FFOB-248****4 GPO 12 Data****Stainless Steel lid with bevelled edges & 14mm rebate**

Capacity: 1 x 4 Gang GPO &amp; 2 x 6 Gang Data Plate

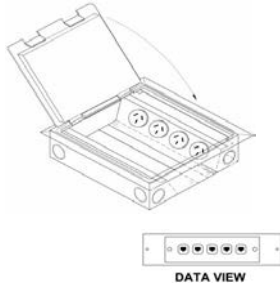
Cover Size - 245 x 245mm

Box size – 230 x 228 x 110mm Deep

Suitable for Category 6 data cabling



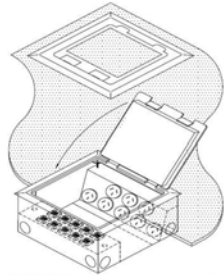
Designed for work stations or equipment in open plan areas

**BOX****DESCRIPTION****FFOB-248/70****4 Auto GPO 5 Data****Stainless Steel lid with bevelled edges & 14mm rebate**

c/w 4 x Autoswitch GPO & 5 x Data  
 Box size – 230 x 228 x 70mm Deep  
 Suitable for Category 6 data cabling



Designed for work stations or equipment  
 in open plan areas

**FFOB-248/8P8D****8 Auto GPO 8 Data****Stainless Steel lid with bevelled edges & 14mm rebate**

c/w 8 x Autoswitch GPO & 8 x Standard Data  
 Box size – 230 x 228 x 110mm Deep  
 Suitable for Category 6 data cabling



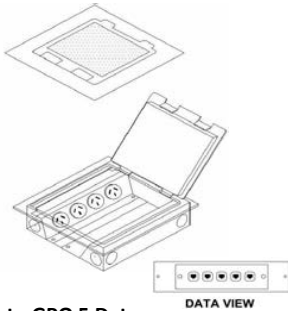
Designed for work stations or equipment  
 in open plan areas

**FFOB-250****4 GPO 12 Data****Stainless Steel lid with 14mm rebate & straight edges**

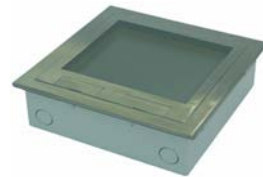
(Straight edges allow the floor box to be laid flush with the floor)  
 Capacity: 1 x 4 Gang GPO & 2 x 6 Gang Data Plate  
 Cover Size - 245 x 245mm  
 Box size – 230 x 228 x 110mm Deep  
 Suitable for Category 6 data cabling



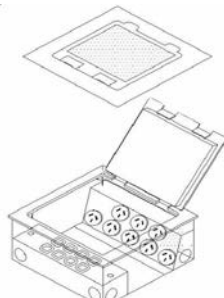
The extra deep rebate can accept a range of flooring options  
 including polished timber boards or ceramic tiles.

**FFOB-250/70****4 Auto GPO 5 Data****Stainless Steel lid with 14mm rebate & straight edges**

c/w 4 Auto Switch GPO & 5 x Data  
 Box size – 230 x 228 x 70mm Deep  
 Suitable for Category 6 data cabling



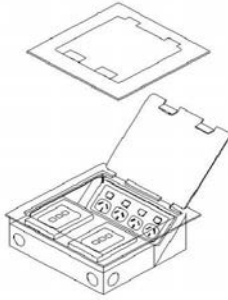
The extra deep rebate can accept a range of flooring options  
 including polished timber boards or ceramic tiles.

**FFOB-250/8P8D****8 Auto GPO 8 Data****Stainless Steel lid with 14mm rebate & straight edges**

c/w 8 x Autoswitch GPO & 8 Standard Data  
 Box size – 230 x 228 x 110mm Deep  
 Suitable for Category 6 data cabling



The extra deep rebate can accept a range of flooring options  
 including polished timber boards or ceramic tiles.

**BOX****DESCRIPTION****FFOB-255****4 GPO 12 Data****Stainless Steel lid with straight edges**

(Straight edges allow the floor box to be laid flush with the floor)

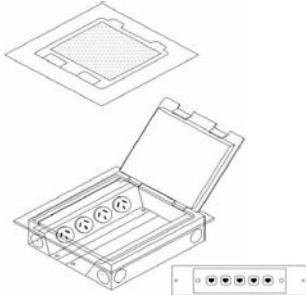
Capacity: 4 x GPO &amp; 2 x 6 Gang Data Plate

Box size – 230 x 228 x 110mm Deep

Suitable for Category 6 data cabling



Designed for work stations or equipment in open plan areas

**FFOB-255/70****4 Auto GPO 5 Data**

DATA VIEW

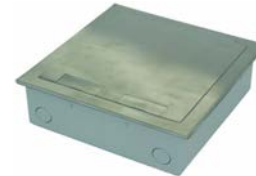
**Stainless Steel lid with straight edges**

c/w 4 x Autoswitch GPO &amp; 5 Standard Data

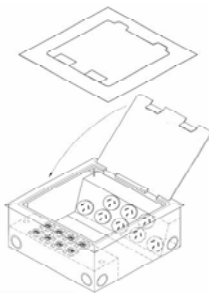
Box size – 230 x 228 x 110mm Deep

Suitable for Category 6 data cabling

Solid stainless steel cover is useful for installations where the flooring material is not suitable for use in a rebated cover.



Designed for work stations or equipment in open plan areas

**FFOB-255/8P8D****8 Auto GPO 8 Data****Stainless Steel lid with straight edges**

c/w 8 x Autoswitch GPO &amp; 8 Standard Data

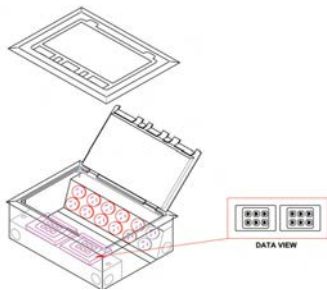
Box size – 230 x 228 x 110mm Deep

Suitable for Category 6 data cabling

Solid stainless steel cover is useful for installations where the flooring material is not suitable for use in a rebated cover.



Designed for work stations or equipment in open plan areas

**FFOB-340****12 x Auto GPO 12 x Data**

DATA VIEW

**Stainless Steel lid with rebate**

c/w 12 x autoswitched GPO's &amp; provision for 2 x 6 Gang Data Mounts

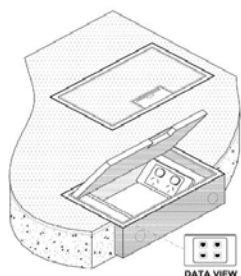
Suitable for Category 6A cabling

Box size = 220 x 320 x 110mm

Box depth 110mm

The cover bevels down to a fine edge and is suitable for carpet, polished floor boards, ceramic tiles and vinyl floor coverings.

(Not suitable for use in wet areas)

**FFOB-520****2 GPO 6 Data**

DATA VIEW

**Flush Floor Box with 8mm Floor/Carpet rebate**

Capacity: 1 x Double GPO &amp; 1 x 6 Gang Data Plate

Suitable for Category 6 data cabling

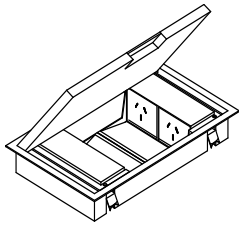
Box size 250 x 160 x 100mm Deep

Lid – Moulded Polyamide

Rectangular Shape





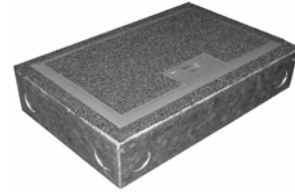
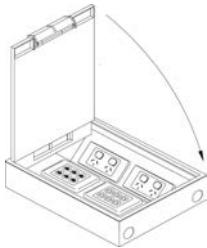
**BOX****DESCRIPTION****FFOB-522**

With 2 Auto GPO 2 Data

**Flush Floor Box with 8mm Floor/Carpet rebate**

Shallow mounting depth – 63mm  
 Complete with 2 x Autoswitch GPO's & 2 x Data Mounts  
 Suitable for Category 6 data cabling

Box size 287 x 187 x 63mm Deep  
 Lid – Moulded Polyamide  
 Rectangular Shape

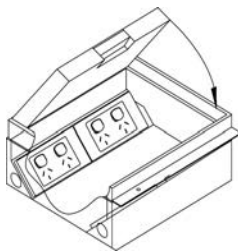
**FFOB-538**

4 GPO 12 Data

**Large Capacity Box with 8mm Floor/Carpet rebate**

Capacity: 4 x Double GPO's & 2 6 Gang Data Plates  
 Suitable for Category 6 data cabling

Box size – 300 x 260 x 110mm Deep  
 Lid – Moulded Polyamide  
 Rectangular Shape

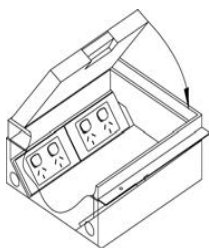
**FFOB-540**

4 GPO 12 Data

**Flush Floor Box - Beige - with 22mm rebate**

22mm Deep Lid Rebate for Timber, Tile or Stone Floor Covering  
 Capacity: 2 x Double GPO's & 2 x 6 Gang Data Plates  
 Suitable for Category 6 & 6A data cabling

Box size - 242 x 230 x 110mm Deep  
 Lid size - 235 x 235mm  
 Lid - Moulded Polyamide - Square Shape  
 Not suitable for wet areas

**FFOB-550S**

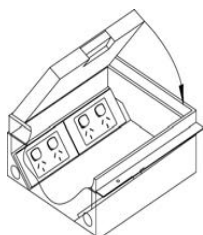
4 GPO 12 Data

**Stainless Steel Lid & Frame with 22mm Rebate**

22mm Deep Lid Rebate for Timber, Tile or Stone Floor Covering  
 The frame has flush side edges designed to be installed level with the floor.

Capacity: 2 x Double GPO's & 2 x 6 Gang Data Pla  
 Suitable for Category 6 data cabling

Box size – 242 x 230 x 110mm Deep  
 Lid Size 235 x 235mm

**FFOB-550B**

4 GPO 12 Data

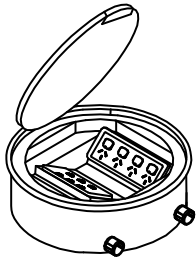
**Brass Lid & Frame with 22mm rebate**

22mm Deep Lid Rebate for Timber, Tile or Stone Floor Covering.  
 The frame has flush side edges designed to be installed level with the floor.

Capacity: 2 x Double GPO's & 2 x 6 Gang Data Pla  
 Suitable for Category 6 data cabling

Box size – 242 x 230 x 110mm Deep  
 Lid Size 235 x 235mm



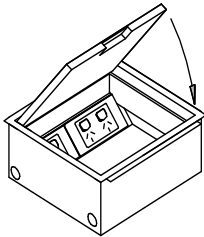
**BOX****DESCRIPTION****FFOB-560**

4 GPO 6 Data

**Hard Wearing Die Cast Alloy Lid & Frame**

Circular Shape - 253mm diameter with 5mm carpet rebate  
 Capacity: 1 x 4 Gang GPO & 1 x 6 Gang Data Plate  
 or 1 x Double GPO & 1 x 6 Gang Data Plate  
 Suitable for Category 6 data cabling  
 Box Size – 245mm Dia. X 110mm Deep  
 Ideal for heavy pedestrian areas such as schools, foyers and showrooms

**Optional lid infill - Black/Silver  
 - Silver**

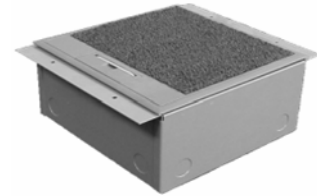
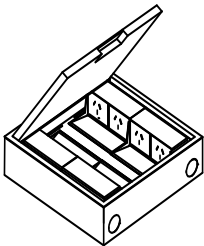
**FFOB-568**

4 GPO 12 Data

**Our Most Popular Box - with 8mm Floor/Carpet Rebate**

Capacity: 2 x Double GPO's & 2 x 6 Gang Data Plate  
 Suitable for Category 6 data cabling

Box size – 242 x 230 x 110mm Deep  
 Lid – Moulded Polyamide – Square Shape

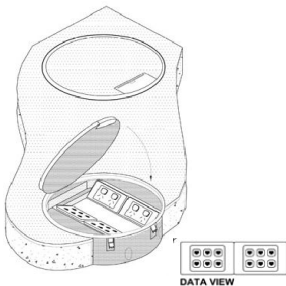
**Optional lid infill****FFOB-570**

4 Auto GPO 4 Data

**Shallow 65mm mounting depth – with 8mm rebate**

Complete with 4 x Autoswitch GPO's & 4 x Data Mounts  
 Suitable for Category 6 data cabling

Box size 245 x 230 x 65mm Deep  
 Lid – Moulded Polyamide – Square Shape

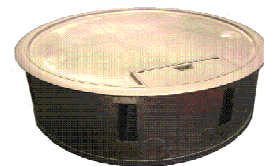
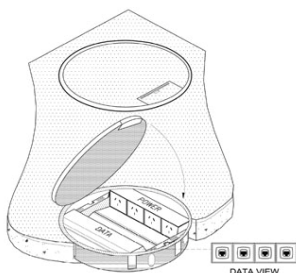
**Optional lid infill****FFOB-590**

4 GPO 12 Data

**Die cast alloy lid & frame – Circular shape - 5mm rebate**

Capacity: 2 x Double GPO's & 2 x 6 Gang Data Mounts  
 Suitable for Category 6 data cabling

Box Size – 350 x 350 x 110mm Deep  
 Ideal for heavy pedestrian areas such as schools, foyers and Showrooms

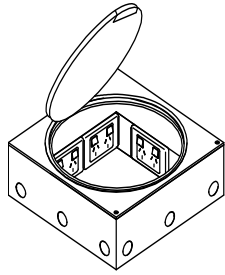
**Optional cast alloy lid infill****FFOB-595**

4 Auto GPO 4 Data

**Die cast alloy lid & frame – Circular shape - 5mm rebate**

Shallow mounting depth – 65mm  
 Capacity: 4 x Autoswitched GPO's & 4 x Data Plates  
 Suitable for Category 6 data cabling  
 Box Size – 350 x 350 x 65mm Deep  
 Ideal for heavy pedestrian areas such as schools, foyers and showrooms.

**Optional cast alloy lid infill**

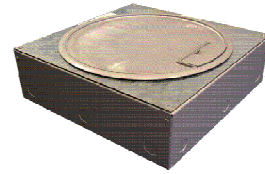
**BOX****DESCRIPTION****FFOB-599**

8 GPO 12 Data

**Largest capacity box in the range**

Capacity: 4 x Double GPO's & 2 x 6 Gang Data Plates  
 Suitable for Category 6 data cabling

Die cast alloy lid & frame – Circular shape  
 Box size – 350 x 350 x 115mm Deep  
 Ideal for heavy pedestrian areas such as schools, foyers and showrooms.

**Optional cast alloy lid infill****GBZ-02**

2 Auto GPO 3 Data

**Pedestal Box**

Moulded Polyamide Box/ Steel Front Plate  
 Box size 110 x 108 x 94mm

2 x Autoswitched outlets &amp; 3 x Data / Voice mechs

**GBZ-04**

4 GPO 6 Data

**Pedestal Box**

Moulded Polyamide Box/ Steel Front Plate  
 Box size 212 x 108 x 94mm

Capacity 1 x Double (or quad) GPO / 1 x 6 gang Data Plate

**FFOB-VAN12****Water Resistant Box - IPX6 - 65mm deep**

Capacity: 4 x Autoswitch GPO & 4 x Data Plates  
 Cover Size: 325mm Diameter - Box Body Size:308mm diameter  
 Satin Silver Cover with black anti-slip rings

Provides ready access to power and data outlets to open areas subject to occasional water or cleaning with water.

Designed for internal use only. Cords are protected by the use of the 'tubus snorkel' fitting which raises the cord entry/exit height.  
 Access is via a 'pin key' which reduces unauthorised access.

**FFOB-VAN13****Water Resistant Box - IPX6 - 110mm deep**

Capacity: 2 x Double GPO's & 2 x Standard Data Plates  
 Cover Size: 325mm Diameter - Box Body Size:308mm diameter  
 Satin Silver Cover with black anti-slip rings

Provides ready access to power and data outlets to open areas subject to occasional water or cleaning with water.

Designed for internal use only. Cords are protected by the use of the 'tubus snorkel' fitting which raises the cord entry/exit height.  
 Access is via a 'pin key' which reduces unauthorised access.

## UMB75



### Cable Umbilical Floor to Desk - 760mm

Designed to hide cables that feed from the floor up to the desktop.

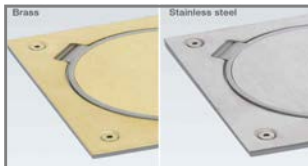
Manufactured from lightweight plastics, segments are removable allowing for height adjustment. Both sides of each segment open so that cables can feed up either side of the umbilical. A weighted base limits any movement once the umbilical is in position.

Standard height is 760mm when fully extended.

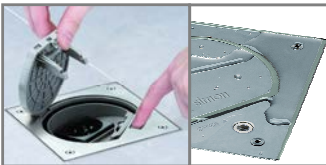
Each segment is 75mm wide x 35mm deep.

Additional segments available - Part No. UMB75X

## FB-70 Range



Brass or Stainless Steel Finish



Manual Lock or  
Allen Key Security Lock

### IP66 Watertight Floor Box Range

Designed to supply connection points to machines in open areas that are connected only occasionally

Can withstand 1kg/cm<sup>2</sup> jet of water when closed

Hard wearing - can withstand 1000kg when closed

For all open spaces where there is constant pedestrian traffic - Shopping Centres, Airports, Hotels, Hospitals, Conference Halls etc.

Available for Pavement or Raised Floor Mounting.

Comes with Data Mounts and/or 10A Auto GPO Outlet.

Manual Lock or Allen Key Security Lock.

FB-71 Range is Brass Finish

FB-72 Range is Stainless Steel Finish



## GEWISS 24 SC Range

### Underfloor Outlet Boxes



GW24611

(Shown with lid removed)



GW24602

(Shown with lid removed)

### Underfloor Outlet Boxes with 6mm Hollow Rebate

6mm hollow rebate accepts appropriate carpet, timber or tile inserts.

GW24601C - Supports up to 4 x GPO's, 12 Data Outlets or mixed combination

GW24602C - Supports up to 8 x GPO's, 24 Data Outlets or mixed combination

### Underfloor Outlet Boxes with Stainless Steel Cover Infill

GW24611C - Supports up to 4 x GPO's, 12 Data Outlets or mixed combination

GW24622C - Supports up to 8 x GPO's, 24 Data Outlets or mixed combination

This lid has a stainless steel design surface finish.

All lids are removable and can be hinged on either side of the box.

Suitable for - wood decks, terraces, parquet or raised flooring.

For flush installation in porcelain stoneware, ceramic and concrete floors a metal box body, that can be cast into the concrete or preformed recess, is supplied.

GW24602 & GW24612 - Supplied Metal Mounting Box



# Floor Outlet Boxes



*Please contact your local distributor for pricing and any technical details or requirements.*



2C Brunner Road, Chullora NSW 2190  
Ph 1300 TOBINS, (02) 87135200, Fax (02) 97905211  
Email sales@tobins.com.au  
www.tobins.com.au



98 Commercial Drive, Thomastown VIC 3074  
Ph (03) 94646555, Fax (03) 94645155  
Email sales@nawcontrols.com.au  
www.nawcontrols.com.au