

# TOBIN

ELECTRICAL COMPONENTS



**BOXCO**<sup>®</sup>  
Enclosure Systems

**eureka**<sup>\*</sup>

**GEWISS**

**TOBIN**

## ENCLOSURES 2014

PART NUMBERS - SIZE LISTING - MOUNTING PLATES

## MATERIALS LISTING

### Mild Steel

- Attractive
- Recyclable
- Can be Drilled/Welded

### Polyester

- Lightweight
- Impact Resistant
- Corrosion Resistant
- Temperature Resistant
- UV Resistant
- Fire Resistant
- Total Insulation
- Maintenance Free
- Self Extinguishing
- High IP Rating
- Easy to work with
- Halogen Free
- Suitable for External Use

### Aluminium

- Strong
- Heat Resistant
- Impact Resistant

### Stainless Steel

- Indoor/Outdoor Use
- Food/Water treatment use
- Suitable for most Environments.

### ABS

(Acrylonitrile Butadiene Styrene)

- Lightweight
- Good Insulation
- Chemical resistant
- Less Expensive
- Maintenance Free

### Polycarbonate

- Strong
- Heat Resistant
- Impact Resistant
- Flame Resistant

### PVC

(Polyvinyl Chloride)

- Lightweight
- Less Expensive
- Durable
- Easy to work with
- Recyclable

### Metal

- Attractive
- Good Mech. Strength
- Can be Drilled/Welded
- Recyclable


## IP RATINGS CHART

	<u>Protection Against Solids</u>
1	Protected against solid objects larger than 50mm.
2	Protected against solid objects larger than 12mm.
3	Protected against solid objects larger than 2.5mm.
4	Protected against solid objects larger than 1mm.
5	Protected against dust that interferes with satisfactory operation.
6	Completely protected against dust.

	<u>Protection Against Liquids</u>
1	Protected against drops of water falling vertically.
2	Protected against drops of water falling up to 15° from the vertical.
3	Protected against spraying Water up to 60° of vertical.
4	Protected against splashing water from all directions.
5	Protected against jets of water from all directions.
6	Protected against jets of water similar to heavy seas.
7	Protected against submersion.

## TOBIN ENCLOSURES - ABS - IP65


Part No	Height mm	Width mm	Depth mm	Type/Model	Mounting Plate
EUR121210	125	125	100	Grey Cover & Grey Body	
EUR121210H	125	125	100	With 29 x 71mm hole	
EUR161275	160	120	75	Grey Cover & Grey Body	
EUR191585	190	150	85	Grey Cover & Grey Body	




**EUR121210H**

## BOXCO ENCLOSURES - SCREW MOUNT LID - ABS - IP66


Part No	Height mm	Width mm	Depth mm	Type/Model	Mounting Plate
BC-AGS050604	50	65	45	Grey Body Grey Cover	0506S
BC-AGS050605	50	65	55	Grey Body Grey Cover	0506S
BC-AGS060905	65	95	55	Grey Body Grey Cover	0609S
BC-AGS071005	75	105	55	Grey Body Grey Cover	0710S
BC-AGS080806	80	80	60	Grey Body Grey Cover	0808S
BC-AGS081104	80	110	45	Grey Body Grey Cover	0811P
BC-AGS081107	80	110	70	Grey Body Grey Cover	0811P
BC-AGS081108	80	110	85	Grey Body Grey Cover	0811P
BC-AGS081307	80	130	70	Grey Body Grey Cover	0813P
BC-AGS081308	80	130	85	Grey Body Grey Cover	0813P
BC-AGS081605	80	160	55	Grey Body Grey Cover	0816P
BC-AGS081608	80	160	85	Grey Body Grey Cover	0816P
BC-AGS081807	80	180	70	Grey Body Grey Cover	0818P
BC-AGS081808	80	180	85	Grey Body Grey Cover	0818P
BC-AGS082507	80	250	70	Grey Body Grey Cover	0825P
BC-AGS082508	80	250	85	Grey Body Grey Cover	0825P
BC-AGS101007	100	100	75	Grey Body Grey Cover	1010P
BC-AGS101010	100	100	100	Grey Body Grey Cover	1010P
BC-AGS101817	100	185	70	Grey Body Grey Cover	1018P
BC-AGS102007	100	200	70	Grey Body Grey Cover	1020S
BC-AGS102307	100	230	70	Grey Body Grey Cover	1023S
BC-AGS121207	125	125	75	Grey Body Grey Cover	1212P
BC-AGS121210	125	125	100	Grey Body Grey Cover	1212P
BC-AGS121707	125	175	75	Grey Body Grey Cover	1217P
BC-AGS121710	125	175	100	Grey Body Grey Cover	1217P
BC-AGS141709	140	170	95	Grey Body Grey Cover	1417P
BC-AGS142309	140	230	95	Grey Body Grey Cover	1423P
BC-AGS151507	150	150	75	Grey Body Grey Cover	1515P
BC-AGS151510	150	150	100	Grey Body Grey Cover	1515P
BC-AGS152007	150	200	75	Grey Body Grey Cover	1520P
BC-AGS152010	150	200	100	Grey Body Grey Cover	1520P
BC-AGS152013	150	200	130	Grey Body Grey Cover	1520P
BC-AGS152016	150	200	160	Grey Body Grey Cover	1520P
BC-AGS152510	150	250	100	Grey Body Grey Cover	1525P
BC-AGS152513	150	250	130	Grey Body Grey Cover	1525P
BC-AGS161607	160	160	70	Grey Body Grey Cover	1616S



**BC-AGS081107**



**BC-AGS121210**



**BC-AGS121710**

\* S = Zinc plated Steel P = ABS Plastic

## BOXCO ENCLOSURES - SCREW MOUNT LID - ABS - IP66

Part No	Height mm	Width mm	Depth mm	Type/Model	Mounting Plate
BC-AGS202010	200	200	100	Grey Body Grey Cover	2020P
BC-AGS202013	200	200	130	Grey Body Grey Cover	2020P
BC-AGS202016	200	200	160	Grey Body Grey Cover	2020P
BC-AGS191913	190	190	130	Grey Body Grey Cover	1919P
BC-AGS192813	190	280	130	Grey Body Grey Cover	1928P
BC-AGS192818	190	280	180	Grey Body Grey Cover	1928P
BC-AGS193813	190	380	130	Grey Body Grey Cover	1938P
BC-AGS193818	190	380	180	Grey Body Grey Cover	1938P
BC-AGS282813	280	280	130	Grey Body Grey Cover	2828P
BC-AGS283413	280	340	130	Grey Body Grey Cover	2834P
BC-AGS283813	280	380	130	Grey Body Grey Cover	2838P
BC-AGS283818	280	380	180	Grey Body Grey Cover	2838P
BC-AGS285613	280	560	130	Grey Body Grey Cover	2856S
BC-AGS334318	330	430	180	Grey Body Grey Cover	3343P
BC-AGS385618	380	560	160	Grey Body Grey Cover	3856S
BC-ATS050604	50	65	45	Grey Body Transparent Cover	0506S
BC-ATS050605	50	65	55	Grey Body Transparent Cover	0506S
BC-ATS060905	65	95	55	Grey Body Transparent Cover	0609S
BC-ATS071005	75	105	55	Grey Body Transparent Cover	0710S
BC-ATS080806	80	80	60	Grey Body Transparent Cover	0808S
BC-ATS081104	80	110	45	Grey Body Transparent Cover	0811P
BC-ATS081107	80	110	70	Grey Body Transparent Cover	0811P
BC-ATS081108	80	110	85	Grey Body Transparent Cover	0811P
BC-ATS081307	80	130	70	Grey Body Transparent Cover	0813P
BC-ATS081308	80	130	85	Grey Body Transparent Cover	0813P
BC-ATS081605	80	160	55	Grey Body Transparent Cover	0816P
BC-ATS081608	80	160	85	Grey Body Transparent Cover	0816P
BC-ATS081807	80	180	70	Grey Body Transparent Cover	0818P
BC-ATS081808	80	180	85	Grey Body Transparent Cover	0818P
BC-ATS082507	80	250	70	Grey Body Transparent Cover	0825P
BC-ATS082508	80	250	85	Grey Body Transparent Cover	0825P
BC-ATS101007	100	100	75	Grey Body Transparent Cover	1010P
BC-ATS101010	100	100	100	Grey Body Transparent Cover	1010P
BC-ATS101817	100	185	70	Grey Body Transparent Cover	1018P
BC-ATS102007	100	200	70	Grey Body Transparent Cover	1020S
BC-ATS102307	100	230	70	Grey Body Transparent Cover	1023S
BC-ATS121207	125	125	75	Grey Body Transparent Cover	1212P
BC-ATS121210	125	125	100	Grey Body Transparent Cover	1212P
BC-ATS121707	125	175	75	Grey Body Transparent Cover	1217P
BC-ATS121710	125	175	100	Grey Body Transparent Cover	1217P
BC-ATS141709	140	170	95	Grey Body Transparent Cover	1417P
BC-ATS142309	140	230	95	Grey Body Transparent Cover	1423P
BC-ATS151507	150	150	75	Grey Body Transparent Cover	1515P
BC-ATS151510	150	150	100	Grey Body Transparent Cover	1515P
BC-ATS152007	150	200	75	Grey Body Transparent Cover	1520P



**Boxco Screw Mount Lids**




**BC-ATS121707**

\* S = Zinc plated Steel P = ABS Plastic

## BOXCO ENCLOSURES - SCREW MOUNT LID - ABS - IP66

Part No	Height mm	Width mm	Depth mm	Type/Model	Mounting Plate
BC-ATS152010	150	200	100	Grey Body Transparent Cover	1520P
BC-ATS152013	150	200	130	Grey Body Transparent Cover	1520P
BC-ATS152016	150	200	160	Grey Body Transparent Cover	1520P
BC-ATS152510	150	250	100	Grey Body Transparent Cover	1525P
BC-ATS152513	150	250	130	Grey Body Transparent Cover	1525P
BC-ATS161607	160	160	70	Grey Body Transparent Cover	1616S
BC-ATS202010	200	200	100	Grey Body Transparent Cover	2020P
BC-ATS202013	200	200	130	Grey Body Transparent Cover	2020P
BC-ATS202016	200	200	160	Grey Body Transparent Cover	2020P
BC-ATS191913	190	190	130	Grey Body Transparent Cover	1919P
BC-ATS192813	190	280	130	Grey Body Transparent Cover	1928P
BC-ATS192818	190	280	180	Grey Body Transparent Cover	1928P
BC-ATS193813	190	380	130	Grey Body Transparent Cover	1938P
BC-ATS193818	190	380	180	Grey Body Transparent Cover	1938P
BC-ATS282813	280	280	130	Grey Body Transparent Cover	2828P
BC-ATS283413	280	340	130	Grey Body Transparent Cover	2834P
BC-ATS283813	280	380	130	Grey Body Transparent Cover	2838P
BC-ATS283818	280	380	180	Grey Body Transparent Cover	2838P
BC-ATS285613	280	560	130	Grey Body Transparent Cover	2856S
BC-ATS334318	330	430	180	Grey Body Transparent Cover	3343P
BC-ATS385618	380	560	160	Grey Body Transparent Cover	3856S

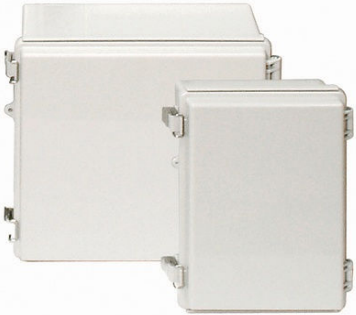


**Boxco Screw Mount Lids**

\* S = Zinc plated Steel P = ABS Plastic

## BOXCO ENCLOSURES HINGED LID - ABS - IP66

Part No	Height mm	Width mm	Depth mm	Type/Model	Mounting Plate
BC-AGP091207	90	120	70	Grey Enclosure Hinged Cover	0912P
BC-AGP091208	90	120	85	Grey Enclosure Hinged Cover	0912P
BC-AGP101507	100	150	70	Grey Enclosure Hinged Cover	1015P
BC-AGP101508	100	150	85	Grey Enclosure Hinged Cover	1015P
BC-AGP112107	110	210	75	Grey Enclosure Hinged Cover	1121P
BC-AGP112110	110	210	100	Grey Enclosure Hinged Cover	1121P
BC-AGP112607	110	260	75	Grey Enclosure Hinged Cover	1126P
BC-AGP112610	110	260	100	Grey Enclosure Hinged Cover	1126P
BC-AGP131508	135	155	85	Grey Enclosure Hinged Cover	1315P
BC-AGP131808	135	185	85	Grey Enclosure Hinged Cover	1318P
BC-AGP131810	135	185	100	Grey Enclosure Hinged Cover	1318P
BC-AGP151509	150	150	90	Grey Enclosure Hinged Cover	1515P
BC-AGP151512	150	150	120	Grey Enclosure Hinged Cover	1515P
BC-AGP162110	160	210	100	Grey Enclosure Hinged Cover	1621P
BC-AGP162113	160	210	130	Grey Enclosure Hinged Cover	1621P
BC-AGP162610	160	260	100	Grey Enclosure Hinged Cover	1626P
BC-AGP162613	160	260	130	Grey Enclosure Hinged Cover	1626P
BC-AGP172211	170	220	110	Grey Enclosure Hinged Cover	1722P
BC-AGP172711	170	270	110	Grey Enclosure Hinged Cover	1727P



**Hinged Lid Boxes**

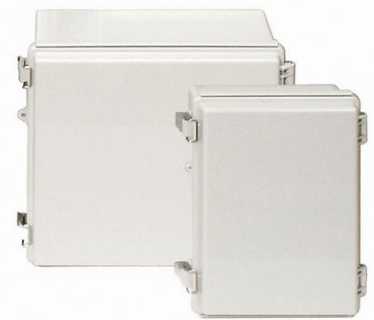
\* S = Zinc plated Steel P = ABS Plastic

## BOXCO ENCLOSURES HINGED LID - ABS - IP66

Part No	Height mm	Width mm	Depth mm	Type/Model	Mounting Plate
BC-AGP212110	210	210	100	Grey Enclosure Hinged Cover	2121P
BC-AGP212113	210	210	130	Grey Enclosure Hinged Cover	2121P
BC-AGP192810	190	280	100	Grey Enclosure Hinged Cover	1928P
BC-AGP192814	190	280	140	Grey Enclosure Hinged Cover	1928P
BC-AGP203013	200	300	130	Grey Enclosure Hinged Cover	2030P
BC-AGP203015	200	300	150	Grey Enclosure Hinged Cover	2030P
BC-AGP203018	200	300	180	Grey Enclosure Hinged Cover	2030P
BC-AGP253515	250	350	150	Grey Enclosure Hinged Cover	2535P
BC-AGP253518	250	350	180	Grey Enclosure Hinged Cover	2535P
BC-AGP282813	280	280	130	Grey Enclosure Hinged Cover	2828P
BC-AGP283813	280	380	130	Grey Enclosure Hinged Cover	2838P
BC-AGP303015	300	300	150	Grey Enclosure Hinged Cover	3030P
BC-AGP303018	300	300	180	Grey Enclosure Hinged Cover	3030P
BC-AGP304012	300	400	120	Grey Enclosure Hinged Cover	3040P
BC-AGP304015	300	400	150	Grey Enclosure Hinged Cover	3040P
BC-AGP304018	300	400	180	Grey Enclosure Hinged Cover	3040P
BC-AGP353515	350	350	150	Grey Enclosure Hinged Cover	3535P
BC-AGP353518	350	350	180	Grey Enclosure Hinged Cover	3535P
BC-AGP354512	350	450	120	Grey Enclosure Hinged Cover	3545P
BC-AGP354516	350	450	160	Grey Enclosure Hinged Cover	3545P
BC-AGP354520	350	450	200	Grey Enclosure Hinged Cover	3545P
BC-AGP405016	400	500	160	Grey Enclosure Hinged Cover	4050P
BC-AGP405020	400	500	200	Grey Enclosure Hinged Cover	4050P
BC-AGP406018	400	600	180	Grey Enclosure Hinged Cover	4060P
BC-AGP406023	400	600	230	Grey Enclosure Hinged Cover	4060P
BC-AGP506018	530	630	185	Grey Enclosure Hinged Cover	5060P
BC-AGP506025	530	630	255	Grey Enclosure Hinged Cover	5060P
BC-AGP507018	530	730	185	Grey Enclosure Hinged Cover	5070P
BC-AGP507025	530	730	255	Grey Enclosure Hinged Cover	5070P
BC-AGP608018	630	830	185	Grey Enclosure Hinged Cover	6080S
BC-AGP608028	630	830	285	Grey Enclosure Hinged Cover	6080S
BC-ATP091207	90	120	70	Grey Encl. Hinged Clear Cover	0912P
BC-ATP091208	90	120	85	Grey Encl. Hinged Clear Cover	0912P
BC-ATP101507	100	150	70	Grey Encl. Hinged Clear Cover	1015P
BC-ATP101508	100	150	85	Grey Encl. Hinged Clear Cover	1015P
BC-ATP112107	110	210	75	Grey Encl. Hinged Clear Cover	1121P
BC-ATP112110	110	210	100	Grey Encl. Hinged Clear Cover	1121P
BC-ATP112607	110	260	75	Grey Encl. Hinged Clear Cover	1126P
BC-ATP112610	110	260	100	Grey Encl. Hinged Clear Cover	1126P
BC-ATP131508	135	155	85	Grey Encl. Hinged Clear Cover	1315P
BC-ATP131808	135	185	85	Grey Encl. Hinged Clear Cover	1318P
BC-ATP131810	135	185	100	Grey Encl. Hinged Clear Cover	1318P
BC-ATP151509	150	150	90	Grey Encl. Hinged Clear Cover	1515P
BC-ATP151512	150	150	120	Grey Encl. Hinged Clear Cover	1515P
BC-ATP162110	160	210	100	Grey Encl. Hinged Clear Cover	1621P



**BC-AGP-192814**



**Hinged Lid Boxes**



**BC-ATP091207**

\* S = Zinc plated Steel P = ABS Plastic

## BOXCO ENCLOSURES HINGED LID - ABS - IP66

Part No	Height mm	Width mm	Depth mm	Type/Model	Mounting Plate
BC-ATP162113	160	210	130	Grey Encl. Hinged Clear Cover	1621P
BC-ATP162610	160	260	100	Grey Encl. Hinged Clear Cover	1626P
BC-ATP162613	160	260	130	Grey Encl. Hinged Clear Cover	1626P
BC-ATP172211	170	220	110	Grey Encl. Hinged Clear Cover	1722P
BC-ATP172711	170	270	110	Grey Encl. Hinged Clear Cover	1727P
BC-ATP212110	210	210	100	Grey Encl. Hinged Clear Cover	2121P
BC-ATP212113	210	210	130	Grey Encl. Hinged Clear Cover	2121P
BC-ATP192810	190	280	100	Grey Encl. Hinged Clear Cover	1928P
BC-ATP192814	190	280	140	Grey Encl. Hinged Clear Cover	1928P
BC-ATP203013	200	300	130	Grey Encl. Hinged Clear Cover	2030P
BC-ATP203015	200	300	150	Grey Encl. Hinged Clear Cover	2030P
BC-ATP203018	200	300	180	Grey Encl. Hinged Clear Cover	2030P
BC-ATP253515	250	350	150	Grey Encl. Hinged Clear Cover	2535P
BC-ATP253518	250	350	180	Grey Encl. Hinged Clear Cover	2535P
BC-ATP282813	280	280	130	Grey Encl. Hinged Clear Cover	2828P
BC-ATP283813	280	380	130	Grey Encl. Hinged Clear Cover	2838P
BC-ATP303015	300	300	150	Grey Encl. Hinged Clear Cover	3030P
BC-ATP303018	300	300	180	Grey Encl. Hinged Clear Cover	3030P
BC-ATP304012	300	400	120	Grey Encl. Hinged Clear Cover	3040P
BC-ATP304015	300	400	150	Grey Encl. Hinged Clear Cover	3040P
BC-ATP304018	300	400	180	Grey Encl. Hinged Clear Cover	3040P
BC-ATP353515	350	350	150	Grey Encl. Hinged Clear Cover	3535P
BC-ATP353518	350	350	180	Grey Encl. Hinged Clear Cover	3535P
BC-ATP354512	350	450	120	Grey Encl. Hinged Clear Cover	3545P
BC-ATP354516	350	450	160	Grey Encl. Hinged Clear Cover	3545P
BC-ATP354520	350	450	200	Grey Encl. Hinged Clear Cover	3545P
BC-ATP405016	400	500	160	Grey Encl. Hinged Clear Cover	4050P
BC-ATP405020	400	500	200	Grey Encl. Hinged Clear Cover	54050P
BC-ATP406018	400	600	180	Grey Encl. Hinged Clear Cover	4060P
BC-ATP406023	400	600	230	Grey Encl. Hinged Clear Cover	4060P
BC-ATP506018	530	630	185	Grey Encl. Hinged Clear Cover	5060P
BC-ATP506025	530	630	255	Grey Encl. Hinged Clear Cover	5060P
BC-ATP507018	530	730	185	Grey Encl. Hinged Clear Cover	5070P
BC-ATP507025	530	730	255	Grey Encl. Hinged Clear Cover	5070P
BC-ATP608018	630	830	185	Grey Encl. Hinged Clear Cover	6080S
BC-ATP608028	630	830	285	Grey Encl. Hinged Clear Cover	6080S



**Clear Lid**



**Internal Door**

\* S = Zinc plated Steel P = ABS Plastic

## BOXCO ENCLOSURES - SCREW MOUNT LID - POLYCARBONATE - IP66

Part No	Height mm	Width mm	Depth mm	Type/Model	Mounting Plate
BC-CGS050604	50	65	45	Grey Body Grey Cover	0506S
BC-CGS050605	50	65	55	Grey Body Grey Cover	0506S
BC-CGS060905	65	95	55	Grey Body Grey Cover	0609S
BC-CGS071005	75	105	55	Grey Body Grey Cover	0710S



\* S = Zinc plated Steel P = ABS Plastic

## BOXCO ENCLOSURES - SCREW MOUNT LID - POLYCARBONATE - IP66

Part No	Height mm	Width mm	Depth mm	Type/Model	Mounting Plate
BC-CGS080806	80	80	60	Grey Body Grey Cover	0808P
BC-CGS081104	80	110	45	Grey Body Grey Cover	0811P
BC-CGS081107	80	110	70	Grey Body Grey Cover	0811P
BC-CGS081108	80	110	85	Grey Body Grey Cover	0811P
BC-CGS081307	80	130	70	Grey Body Grey Cover	0813P
BC-CGS081308	80	130	85	Grey Body Grey Cover	0813P
BC-CGS081605	80	160	55	Grey Body Grey Cover	0816P
BC-CGS081608	80	160	85	Grey Body Grey Cover	0816P
BC-CGS081807	80	180	70	Grey Body Grey Cover	0818P
BC-CGS081808	80	180	85	Grey Body Grey Cover	0818P
BC-CGS082507	80	250	70	Grey Body Grey Cover	0825P
BC-CGS082508	80	250	85	Grey Body Grey Cover	0825P
BC-CGS101007	100	100	75	Grey Body Grey Cover	1010P
BC-CGS101010	100	100	100	Grey Body Grey Cover	1010P
BC-CGS101817	100	185	70	Grey Body Grey Cover	1018P
BC-CGS102007	100	200	70	Grey Body Grey Cover	1020S
BC-CGS102307	100	230	70	Grey Body Grey Cover	1023S
BC-CGS121207	125	125	75	Grey Body Grey Cover	1212P
BC-CGS121210	125	125	100	Grey Body Grey Cover	1212P
BC-CGS121707	125	175	75	Grey Body Grey Cover	1217P
BC-CGS121710	125	175	100	Grey Body Grey Cover	1217P
BC-CGS141709	140	170	95	Grey Body Grey Cover	1417P
BC-CGS142309	140	230	95	Grey Body Grey Cover	1423P
BC-CGS151507	150	150	75	Grey Body Grey Cover	1515P
BC-CGS151510	150	150	100	Grey Body Grey Cover	1515P
BC-CGS152007	150	200	75	Grey Body Grey Cover	1520P
BC-CGS152010	150	200	100	Grey Body Grey Cover	1520P
BC-CGS152013	150	200	130	Grey Body Grey Cover	1520P
BC-CGS152016	150	200	160	Grey Body Grey Cover	1520P
BC-CGS152510	150	250	100	Grey Body Grey Cover	1525P
BC-CGS152513	150	250	130	Grey Body Grey Cover	1525P
BC-CGS161607	160	160	70	Grey Body Grey Cover	1616S
BC-CGS202010	200	200	100	Grey Body Grey Cover	2020P
BC-CGS202013	200	200	130	Grey Body Grey Cover	2020P
BC-CGS202016	200	200	160	Grey Body Grey Cover	2020P
BC-CGS191913	190	190	130	Grey Body Grey Cover	1919P
BC-CGS192813	190	280	130	Grey Body Grey Cover	1928P
BC-CGS192818	190	280	180	Grey Body Grey Cover	1928P
BC-CGS193813	190	380	130	Grey Body Grey Cover	1938P
BC-CGS193818	190	380	180	Grey Body Grey Cover	1938P
BC-CGS282813	280	280	130	Grey Body Grey Cover	2828P
BC-CGS283413	280	340	130	Grey Body Grey Cover	2834P
BC-CGS283813	280	380	130	Grey Body Grey Cover	2838P
BC-CGS283818	280	380	180	Grey Body Grey Cover	2838P
BC-CGS285613	280	560	130	Grey Body Grey Cover	2856S
BC-CGS334318	330	430	180	Grey Body Grey Cover	3343P



**Boxco Screwed Lid**



**Boxco Screwed Lid**

\* S = Zinc plated Steel P = ABS Plastic



## BOXCO ENCLOSURES - SCREW MOUNT LID - POLYCARBONATE - IP66

Part No	Height mm	Width mm	Depth mm	Type/Model	Mounting Plate
BC-CGS385618	380	560	160	Grey Body Grey Cover	3856S
BC-CTS050604	50	65	45	Grey Body Transparent Cover	0506S
BC-CTS050605	50	65	55	Grey Body Transparent Cover	0506S
BC-CTS060905	65	95	55	Grey Body Transparent Cover	0609S
BC-CTS071005	75	105	55	Grey Body Transparent Cover	0710S
BC-CTS080806	80	80	60	Grey Body Transparent Cover	0808S
BC-CTS081104	80	110	45	Grey Body Transparent Cover	0811P
BC-CTS081107	80	110	70	Grey Body Transparent Cover	0811P
BC-CTS081108	80	110	85	Grey Body Transparent Cover	0811P
BC-CTS081307	80	130	70	Grey Body Transparent Cover	0813P
BC-CTS081308	80	130	85	Grey Body Transparent Cover	0813P
BC-CTS081605	80	160	55	Grey Body Transparent Cover	0816P
BC-CTS081608	80	160	85	Grey Body Transparent Cover	0816P
BC-CTS081807	80	180	70	Grey Body Transparent Cover	0818P
BC-CTS081808	80	180	85	Grey Body Transparent Cover	0818P
BC-CTS082507	80	250	70	Grey Body Transparent Cover	0825P
BC-CTS082508	80	250	85	Grey Body Transparent Cover	0825P
BC-CTS101007	100	100	75	Grey Body Transparent Cover	1010P
BC-CTS101010	100	100	100	Grey Body Transparent Cover	1010P
BC-CTS101807	100	185	70	Grey Body Transparent Cover	1018P
BC-CTS102007	100	200	70	Grey Body Transparent Cover	1020S
BC-CTS102307	100	230	70	Grey Body Transparent Cover	1023S
BC-CTS121207	125	125	75	Grey Body Transparent Cover	1212P
BC-CTS121210	125	125	100	Grey Body Transparent Cover	1212P
BC-CTS121707	125	175	75	Grey Body Transparent Cover	1217P
BC-CTS121710	125	175	100	Grey Body Transparent Cover	1217P
BC-CTS141709	140	170	95	Grey Body Transparent Cover	1417P
BC-CTS142309	140	230	95	Grey Body Transparent Cover	1423P
BC-CTS151507	150	150	75	Grey Body Transparent Cover	1515P
BC-CTS151510	150	150	100	Grey Body Transparent Cover	1515P
BC-CTS152007	150	200	75	Grey Body Transparent Cover	1520P
BC-CTS152010	150	200	100	Grey Body Transparent Cover	1520P
BC-CTS152013	150	200	130	Grey Body Transparent Cover	1520P
BC-CTS152016	150	200	160	Grey Body Transparent Cover	1520P
BC-CTS152510	150	250	100	Grey Body Transparent Cover	1525P
BC-CTS152513	150	250	130	Grey Body Transparent Cover	1525P
BC-CTS161607	160	160	70	Grey Body Transparent Cover	1616S
BC-CTS202010	200	200	100	Grey Body Transparent Cover	2020P
BC-CTS202013	200	200	130	Grey Body Transparent Cover	2020P
BC-CTS202016	200	200	160	Grey Body Transparent Cover	2020P
BC-CTS191913	190	190	130	Grey Body Transparent Cover	1919P
BC-CTS192813	190	280	130	Grey Body Transparent Cover	1928P
BC-CTS192818	190	280	180	Grey Body Transparent Cover	1928P
BC-CTS193813	190	380	130	Grey Body Transparent Cover	1938P
BC-CTS193818	190	380	180	Grey Body Transparent Cover	1938P



**Clear Lid**



**Boxco Screwed Lid Range**

\* S = Zinc plated Steel P = ABS Plastic

## BOXCO ENCLOSURES - SCREW MOUNT LID - POLYCARBONATE - IP66

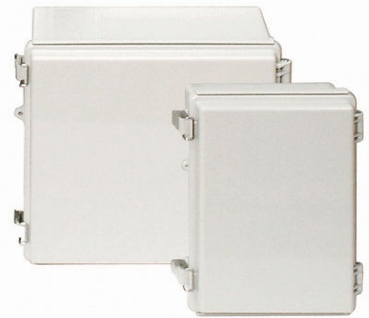
Part No	Height mm	Width mm	Depth mm	Type/Model	Mounting Plate
BC-CTS282813	280	280	130	Grey Body Transparent Cover	2828P
BC-CTS283413	280	340	130	Grey Body Transparent Cover	2834P
BC-CTS283813	280	380	130	Grey Body Transparent Cover	2838P
BC-CTS283818	280	380	180	Grey Body Transparent Cover	2838P
BC-CTS285613	280	560	130	Grey Body Transparent Cover	2856S
BC-CTS334318	330	430	180	Grey Body Transparent Cover	3343P
BC-CTS385618	380	560	160	Grey Body Transparent Cover	3856S



\* S = Zinc plated Steel P = ABS Plastic

## BOXCO ENCLOSURES HINGED LID - POLYCARBONATE - IP66

Part No	Height mm	Width mm	Depth mm	Type/Model	Mounting Plate
BC-CGP091207	90	120	70	Grey Enclosure Hinged Cover	0912P
BC-CGP091208	90	120	85	Grey Enclosure Hinged Cover	0912P
BC-CGP101507	100	150	70	Grey Enclosure Hinged Cover	1015P
BC-CGP101508	100	150	85	Grey Enclosure Hinged Cover	1015P
BC-CGP112107	110	210	75	Grey Enclosure Hinged Cover	1121P
BC-CGP112110	110	210	100	Grey Enclosure Hinged Cover	1121P
BC-CGP112607	110	260	75	Grey Enclosure Hinged Cover	1126P
BC-CGP112610	110	260	100	Grey Enclosure Hinged Cover	1126P
BC-CGP131508	135	155	85	Grey Enclosure Hinged Cover	1315P
BC-CGP131808	135	185	85	Grey Enclosure Hinged Cover	1318P
BC-CGP131810	135	185	100	Grey Enclosure Hinged Cover	1318P
BC-CGP151509	150	150	90	Grey Enclosure Hinged Cover	1515P
BC-CGP151512	150	150	120	Grey Enclosure Hinged Cover	1515P
BC-CGP162110	160	210	100	Grey Enclosure Hinged Cover	1621P
BC-CGP162113	160	210	130	Grey Enclosure Hinged Cover	1621P
BC-CGP162610	160	260	100	Grey Enclosure Hinged Cover	1626P
BC-CGP162613	160	260	130	Grey Enclosure Hinged Cover	1626P
BC-CGP172211	170	220	110	Grey Enclosure Hinged Cover	1722P
BC-CGP172711	170	270	110	Grey Enclosure Hinged Cover	1727P
BC-CGP212110	210	210	100	Grey Enclosure Hinged Cover	2121P
BC-CGP212113	210	210	130	Grey Enclosure Hinged Cover	2121P
BC-CGP192810	190	280	100	Grey Enclosure Hinged Cover	1928P
BC-CGP192814	190	280	140	Grey Enclosure Hinged Cover	1928P
BC-CGP203013	200	300	130	Grey Enclosure Hinged Cover	2030P
BC-CGP203015	200	300	150	Grey Enclosure Hinged Cover	2030P
BC-CGP203018	200	300	180	Grey Enclosure Hinged Cover	2030P
BC-CGP253515	250	350	150	Grey Enclosure Hinged Cover	2535P
BC-CGP253518	250	350	180	Grey Enclosure Hinged Cover	2535P
BC-CGP282813	280	280	130	Grey Enclosure Hinged Cover	2828P
BC-CGP283813	280	380	130	Grey Enclosure Hinged Cover	2838P
BC-CGP303015	300	300	150	Grey Enclosure Hinged Cover	3030P
BC-CGP303018	300	300	180	Grey Enclosure Hinged Cover	3030P
BC-CGP304012	300	400	120	Grey Enclosure Hinged Cover	3040P



**Hinged Enclosures**



**Boxco Hinged Range**

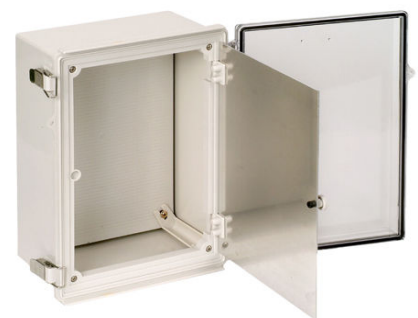
\* S = Zinc plated Steel P = ABS Plastic

## BOXCO ENCLOSURES HINGED LID - POLYCARBONATE - IP66

Part No	Height mm	Width mm	Depth mm	Type/Model	Mounting Plate
BC-CGP304015	300	400	150	Grey Enclosure Hinged Cover	3040P
BC-CGP304018	300	400	180	Grey Enclosure Hinged Cover	3040P
BC-CGP353515	350	350	150	Grey Enclosure Hinged Cover	3535P
BC-CGP353518	350	350	180	Grey Enclosure Hinged Cover	3535P
BC-CGP354512	350	450	120	Grey Enclosure Hinged Cover	3545P
BC-CGP354516	350	450	160	Grey Enclosure Hinged Cover	3545P
BC-CGP354520	350	450	200	Grey Enclosure Hinged Cover	3545P
BC-CGP405016	400	500	160	Grey Enclosure Hinged Cover	4050P
BC-CGP405020	400	500	200	Grey Enclosure Hinged Cover	54050P
BC-CGP406018	400	600	180	Grey Enclosure Hinged Cover	4060P
BC-CGP406023	400	600	230	Grey Enclosure Hinged Cover	4060P
BC-CGP506018	530	630	185	Grey Enclosure Hinged Cover	5060P
BC-CGP506025	530	630	255	Grey Enclosure Hinged Cover	5060P
BC-CGP507018	530	730	185	Grey Enclosure Hinged Cover	5070P
BC-CGP507025	530	730	255	Grey Enclosure Hinged Cover	5070P
BC-CGP608018	630	830	185	Grey Enclosure Hinged Cover	6080S
BC-CGP608028	630	830	285	Grey Enclosure Hinged Cover	6080S
BC-CTP091207	90	120	70	Grey Encl. Hinged Clear Cover	0912P
BC-CTP091208	90	120	85	Grey Encl. Hinged Clear Cover	0912P
BC-CTP101507	100	150	70	Grey Encl. Hinged Clear Cover	1015P
BC-CTP101508	100	150	85	Grey Encl. Hinged Clear Cover	1015P
BC-CTP112107	110	210	75	Grey Encl. Hinged Clear Cover	1121P
BC-CTP112110	110	210	100	Grey Encl. Hinged Clear Cover	1121P
BC-CTP112607	110	260	75	Grey Encl. Hinged Clear Cover	1126P
BC-CTP112610	110	260	100	Grey Encl. Hinged Clear Cover	1126P
BC-CTP131508	135	155	85	Grey Encl. Hinged Clear Cover	1315P
BC-CTP131808	135	185	85	Grey Encl. Hinged Clear Cover	1318P
BC-CTP131810	135	185	100	Grey Encl. Hinged Clear Cover	1318P
BC-CTP151509	150	150	90	Grey Encl. Hinged Clear Cover	1515P
BC-CTP151512	150	150	120	Grey Encl. Hinged Clear Cover	1515P
BC-CTP162110	160	210	100	Grey Encl. Hinged Clear Cover	1621P
BC-CTP162113	160	210	130	Grey Encl. Hinged Clear Cover	1621P
BC-CTP162610	160	260	100	Grey Encl. Hinged Clear Cover	1626P
BC-CTP162613	160	260	130	Grey Encl. Hinged Clear Cover	1626P
BC-CTP172211	170	220	110	Grey Encl. Hinged Clear Cover	1722P
BC-CTP172711	170	270	110	Grey Encl. Hinged Clear Cover	1727P
BC-CTP212110	210	210	100	Grey Encl. Hinged Clear Cover	2121P
BC-CTP212113	210	210	130	Grey Encl. Hinged Clear Cover	2121P
BC-CTP192810	190	280	100	Grey Encl. Hinged Clear Cover	1928P
BC-CTP192814	190	280	140	Grey Encl. Hinged Clear Cover	1928P
BC-CTP203013	200	300	130	Grey Encl. Hinged Clear Cover	2030P
BC-CTP203015	200	300	150	Grey Encl. Hinged Clear Cover	2030P
BC-CTP203018	200	300	180	Grey Encl. Hinged Clear Cover	2030P
BC-CTP253515	250	350	150	Grey Encl. Hinged Clear Cover	2535P
BC-CTP253518	250	350	180	Grey Encl. Hinged Clear Cover	2535P



**Hinged Enclosures**



**With Internal Door**

\* S = Zinc plated Steel P = ABS Plastic

## BOXCO ENCLOSURES HINGED LID - POLYCARBONATE - IP66

Part No	Height mm	Width mm	Depth mm	Type/Model	Mounting Plate
BC-CTP282813	280	280	130	Grey Encl. Hinged Clear Cover	2828P
BC-CTP283813	280	380	130	Grey Encl. Hinged Clear Cover	2838P
BC-CTP303015	300	300	150	Grey Encl. Hinged Clear Cover	3030P
BC-CTP303018	300	300	180	Grey Encl. Hinged Clear Cover	3030P
BC-CTP304012	300	400	120	Grey Encl. Hinged Clear Cover	3040P
BC-CTP304015	300	400	150	Grey Encl. Hinged Clear Cover	3040P
BC-CTP304018	300	400	180	Grey Encl. Hinged Clear Cover	3040P
BC-CTP353515	350	350	150	Grey Encl. Hinged Clear Cover	3535P
BC-CTP353518	350	350	180	Grey Encl. Hinged Clear Cover	3535P
BC-CTP354512	350	450	120	Grey Encl. Hinged Clear Cover	3545P
BC-CTP354516	350	450	160	Grey Encl. Hinged Clear Cover	3545P
BC-CTP354520	350	450	200	Grey Encl. Hinged Clear Cover	3545P
BC-CTP405016	400	500	160	Grey Encl. Hinged Clear Cover	4050P
BC-CTP405020	400	500	200	Grey Encl. Hinged Clear Cover	54050P
BC-CTP406018	400	600	180	Grey Encl. Hinged Clear Cover	4060P
BC-CTP406023	400	600	230	Grey Encl. Hinged Clear Cover	4060P



Hinged Enclosures

\* S = Zinc plated Steel P = ABS Plastic

## BOXCO INTERNAL DOOR FRAME KIT

Part No	Width mm	Length mm	Height mm	To Suit
BC-FA203015	200	300	150	BC-AGP203015
BC-FA253518	250	350	180	BC-AGP253518
BC-FA303015	300	300	150	BC-AGP303015
BC-FA304018	300	400	180	BC-AGP304018
BC-FA405020	400	500	200	BC-AGP405020
BC-FA406023	400	600	230	BC-AGP406023



## BOXCO ACCESSORIES



Key Lock



Plastic Mounting Plates



Wall Brackets B60 - B50 - B40



Cable Glands




Lid Screws



Hinges and Clips

## TOBIN ENCLOSURES - GLASS REINFORCED POLYESTER - IP66


Part No.	Height	Width	Depth	Type/Model	Mounting
TIP-325	300	250	140	Grey Cover & Grey Body	Included
TIP-43	400	300	200	Grey Cover & Grey Body	Included
TIP-44	400	400	200	Grey Cover & Grey Body	Included
TIP-54	500	400	200	Grey Cover & Grey Body	Included
TIP-64	600	400	230	Grey Cover & Grey Body	Included
TIP-65	600	500	230	Grey Cover & Grey Body	Included
TIP-86	800	600	300	Grey Cover & Grey Body	Included



**TIP-43**

## TOBIN ENCLOSURES - GEWISS POLYESTER - IP65


Part No.	Height mm	Width mm	Depth mm	Type/Model	Mounting Plate
GW46002	425	310	160	Hinged Door Grey RAL7035	GW46402
GW46003	500	405	200	Hinged Door Grey RAL7035	GW46403
GW46004	650	405	200	Hinged Door Grey RAL7035	GW46404
GW46005	650	515	250	Hinged Door Grey RAL7035	GW46405
GW46006	800	585	300	Hinged Door Grey RAL7035	GW46406
GW46007	1060	800	350	Hinged Door Grey RAL7035	GW46407
GW46415		500	405	Inner Door	
GW46417		650	515	Inner Door	
GW46419		1060	800	Inner Door	
GW46445				Lockable Handle 2 Keys	
GW46451				Wall Mtg Bkts S/steel (4)	




**GW46002**

## TOBIN ENCLOSURES - GEWISS PVC - IP56

Part No.	Height mm	Width mm	Depth mm	Type/Model	Mounting Plate
44204	100	100	50	Grey Cover & Grey Body	-
44206	150	110	70	Grey Cover & Grey Body	7069
44207	190	140	70	Grey Cover & Grey Body	7077
44208	240	190	90	Grey Cover & Grey Body	7085
44209	300	220	120	Grey Cover & Grey Body	7093
44210	380	300	120	Grey Cover & Grey Body	7101
44211	460	380	120	Grey Cover & Grey Body	44619
44215	120	80	120	Grey Cover & Grey Body	7061
44216	150	110	140	Grey Cover & Grey Body	7069
44217	190	140	140	Grey Cover & Grey Body	7077
44218	240	190	160	Grey Cover & Grey Body	7093
44219	300	220	180	Grey Cover & Grey Body	7093
44220	380	300	180	Grey Cover & Grey Body	7101
44221	460	380	180	Grey Cover & Grey Body	44619
44426	150	110	70	Clear Cover & Grey Body	7069
44428	240	190	90	Clear Cover & Grey Body	7085
44429	300	220	120	Clear Cover & Grey Body	7093
44430	380	300	120	Clear Cover & Grey Body	7101
44431	460	380	120	Clear Cover & Grey Body	44619



**44208**



**44218**

## TOBIN ENCLOSURES - GEWISS PVC - IP56

Part No.	Height mm	Width mm	Depth mm	Type/Model	Mounting Plate
44436	150	110	140	Clear Cover & Grey Body	7069
44437	190	140	140	Clear Cover & Grey Body	7077
44438	240	190	160	Clear Cover & Grey Body	7085
44439	300	220	180	Clear Cover & Grey Body	7093
44440	380	300	180	Clear Cover & Grey Body	7101
44441	460	380	180	Clear Cover & Grey Body	44619



44437

## BOXCO ENCLOSURES - DUAL DOOR ENCLOSURE - ABS/POLYCARBONATE - IP66

Part No.	Height mm	Width mm	Depth mm	Type/Model	Mounting Plate
BC-PGD253516	350	250	160	IP66 Dual Door Enclosure	2535P/S
BC-PGD253519	350	250	190	IP66 Dual Door Enclosure	2535P/S
BC-PGD354513	450	350	130	IP66 Dual Door Enclosure	3545P/S
BC-PGD354517	450	350	170	IP66 Dual Door Enclosure	3545P/S
BC-PGD-354521	450	350	210	IP66 Dual Door Enclosure	3545P/S



BC-PGD253519

## TOBIN ENCLOSURES - ECONOMY METAL - IP65

Part No.	Height mm	Width mm	Depth mm	Type/Model	Mounting Plate
EUR252010	250	200	100	Powdered Coated RAL7035	Included
EUR252015	250	200	150	Powdered Coated RAL7035	Included
EUR252020	250	200	200	Powdered Coated RAL7035	Included
EUR302015	300	200	150	Powdered Coated RAL7035	Included
EUR302515	300	250	150	Powdered Coated RAL7035	Included
EUR302520	300	250	200	Powdered Coated RAL7035	Included
EUR303015	300	300	150	Powdered Coated RAL7035	Included
EUR303020	300	300	200	Powdered Coated RAL7035	Included
EUR403015	400	300	150	Powdered Coated RAL7035	Included
EUR403020	400	300	200	Powdered Coated RAL7035	Included
EUR404020	400	400	200	Powdered Coated RAL7035	Included
EUR406025	400	600	250	Powdered Coated RAL7035	Included
EUR504015	500	400	150	Powdered Coated RAL7035	Included
EUR504020	500	400	200	Powdered Coated RAL7035	Included
EUR504025	500	400	250	Powdered Coated RAL7035	Included
EUR505020	500	500	200	Powdered Coated RAL7035	Included
EUR505025	500	500	250	Powdered Coated RAL7035	Included
EUR604015	600	400	150	Powdered Coated RAL7035	Included
EUR604020	600	400	200	Powdered Coated RAL7035	Included
EUR605015	600	500	150	Powdered Coated RAL7035	Included
EUR604025	600	400	250	Powdered Coated RAL7035	Included
EUR605020	600	500	200	Powdered Coated RAL7035	Included
EUR605025	600	500	250	Powdered Coated RAL7035	Included
EUR606020	600	600	200	Powdered Coated RAL7035	Included
EUR606025	600	600	250	Powdered Coated RAL7035	Included



EUR302515



EUR303020

## TOBIN ENCLOSURES - ECONOMY METAL - IP65

Part No.	Height mm	Width mm	Depth mm	Type/Model	Mounting Plate
EUR606030	600	600	300	Powdered Coated RAL7035	Included
EUR705020	700	500	200	Powdered Coated RAL7035	Included
EUR705025	700	500	250	Powdered Coated RAL7035	Included
EUR806020	800	600	200	Powdered Coated RAL7035	Included
EUR806025	800	600	250	Powdered Coated RAL7035	Included
EUR806030	800	600	300	Powdered Coated RAL7035	Included
EUR808020	800	800	200	Powdered Coated RAL7035	Included
EUR808025	800	800	250	Powdered Coated RAL7035	Included
EUR808030	800	800	300	Powdered Coated RAL7035	Included
EUR1006025	1000	600	250	Powdered Coated RAL7035	Included
EUR1006030	1000	600	300	Powdered Coated RAL7035	Included
EUR1008025	1000	800	250	Powdered Coated RAL7035	Included
EUR1008030	1000	800	300	Powdered Coated RAL7035	Included
EUR10010030	1000	1000	300	Powdered Coated RAL7035	Included
EUR1208030	1200	800	300	Powdered Coated RAL7035	Included
EUR12010030	1200	1000	300	Powdered Coated RAL7035	Included



## TOBIN ENCLOSURES - INNER DOOR KITS

Part No.	Suits Enclosure	Type
EUR-IDK404020	EUR404020	Powdered Coated RAL7035
EUR-IDK505025	EUR505025	Powdered Coated RAL7035
EUR-IDK604025	EUR604025	Powdered Coated RAL7035
EUR-IDK605025	EUR605025	Powdered Coated RAL7035
EUR-IDK606025	EUR606025	Powdered Coated RAL7035
EUR-IDK606030	EUR606030	Powdered Coated RAL7035
EUR-IDK705025	EUR705025	Powdered Coated RAL7035
EUR-IDK806025	EUR806025	Powdered Coated RAL7035
EUR-IDK806030	EUR806030	Powdered Coated RAL7035
EUR-IDK808025	EUR808025	Powdered Coated RAL7035
EUR-IDK808030	EUR808030	Powdered Coated RAL7035
EUR-IDK1006030	EUR1006030	Powdered Coated RAL7035
EUR-IDK1008030	EUR1008030	Powdered Coated RAL7035

## TOBIN ENCLOSURES - ECONOMY ORANGE METAL - IP65

Part No.	Height mm	Width mm	Depth mm	Type/Model	Mounting Plate
EUR404020-OR	400	400	200	Powd. Coated Orange x15	Included
EUR604020-OR	600	400	200	Powd. Coated Orange x15	Included
EUR606020-OR	600	600	200	Powd. Coated Orange x15	Included
EUR705025-OR	700	500	250	Powd. Coated Orange x15	Included
EUR806025-OR	800	600	250	Powd. Coated Orange x15	Included
EUR1006030-OR	1000	600	300	Powd. Coated Orange x15	Included



EUR404020-OR

## TOBIN ENCLOSURES - ECONOMY ORANGE METAL - IP65

Part No.	Height mm	Width mm	Depth mm	Type/Model	Mounting Plate
EUR1008030-OR	1000	800	300	Powd. Coated Orange x15	Included
EUR1208030-OR	1200	800	300	Powd. Coated Orange x15	Included

## TOBIN ENCLOSURES - STAINLESS STEEL - IP65

Part No.	Height mm	Width mm	Depth mm	Type/Model	Mounting Plate
EURX252015	250	200	150	304 S/Steel Hairline Finished	Included
EURX302515	300	250	150	304 S/Steel Hairline Finished	Included
EURX303015	300	300	150	304 S/Steel Hairline Finished	Included
EURX403015	400	300	150	304 S/Steel Hairline Finished	Included
EURX403020	400	300	200	304 S/Steel Hairline Finished	Included
EURX404020	400	400	200	304 S/Steel Hairline Finished	Included
EURX504020	500	400	200	304 S/Steel Hairline Finished	Included
EURX604020	600	400	200	304 S/Steel Hairline Finished	Included
EURX606025	600	600	250	304 S/Steel Hairline Finished	Included
EURX705025	700	500	250	304 S/Steel Hairline Finished	Included
EURX806025	800	600	250	304 S/Steel Hairline Finished	Included
EURX808030	800	800	250	304 S/Steel Hairline Finished	Included
EURX1008030	1000	800	300	304 S/Steel Hairline Finished	Included
EURX1208030	1200	800	300	304 S/Steel Hairline Finished	Included



EURX303015

## TOBIN ENCLOSURES - STAINLESS STEEL - IP66

Part No.	Height mm	Width mm	Depth mm	Type/Model	Mounting Plate
EASP203015WH	300	200	150	316 S/Steel IK109 Impact Rest.	Included
EASP303015WH	300	300	150	316 S/Steel IK109 Impact Rest.	Included
EASP303020WH	300	300	200	316 S/Steel IK109 Impact Rest.	Included
EASP304020WH	400	300	200	316 S/Steel IK109 Impact Rest.	Included
EASP404030WH	400	400	300	316 S/Steel IK109 Impact Rest.	Included
EASP405020WH	500	400	200	316 S/Steel IK109 Impact Rest.	Included
EASP406020WH	600	400	200	316 S/Steel IK109 Impact Rest.	Included
EASP406030WH	600	400	300	316 S/Steel IK109 Impact Rest.	Included
EASP505020WH	500	500	200	316 S/Steel IK109 Impact Rest.	Included
EASP506030WH	600	500	300	316 S/Steel IK109 Impact Rest.	Included
EASP606030WH	600	600	300	316 S/Steel IK109 Impact Rest.	Included
EASP608030WH	800	600	300	316 S/Steel IK109 Impact Rest.	Included
EASP808030WH	800	800	300	316 S/Steel IK109 Impact Rest.	Included
EASP8010030WH	1000	800	300	316 S/Steel IK109 Impact Rest.	Included
EASP8012030WH	1200	800	300	316 S/Steel IK109 Impact Rest.	Included
EASP10010030WH	1000	1000	300	316 S/Steel IK109 Impact Rest.	Included
ERS4031B	Stainless Steel rain hood suit 400 x 300 deep enclosure				
ERS5031B	Stainless Steel rain hood suit 500 x 300 deep enclosure				
ER6031B	Stainless Steel rain hood suit 600 x 300 deep enclosure				




Stainless Steel Enclosures

EKL1 Key Lock Assembly - 2 keys



## BOXCO DIE CAST ALUMINIUM ENCLOSURE - IP67

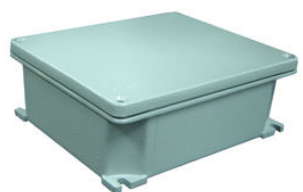
Part No	Height mm	Width mm	Depth mm	Type/Model	Mounting Plate
BC-AL061003	64	98	34	Die Cast Aluminium	6010A
BC-AL080806	80	75	57	Die Cast Aluminium	0808A
BC-AL081306	80	125	57	Die Cast Aluminium	0813A
BC-AL081806	80	175	57	Die Cast Aluminium	0818A
BC-AL082506	80	250	57	Die Cast Aluminium	0825A
BC-AL101008	100	100	80	Die Cast Aluminium	1010A
BC-AL101608	100	160	80	Die Cast Aluminium	1016A
BC-AL121208	120	122	80	Die Cast Aluminium	1212A
BC-AL122208	120	220	80	Die Cast Aluminium	1222A
BC-AL122209	120	220	90	Die Cast Aluminium	1222A
BC-AL151309	150	132	90	Die Cast Aluminium	1513A
BC-AL161609	160	160	90	Die Cast Aluminium	1616A
BC-AL162609	160	260	90	Die Cast Aluminium	1626PL
BC-AL181810	180	180	100	Die Cast Aluminium	1818A
BC-AL232011	230	200	110	Die Cast Aluminium	2320PL



**Boxco Aluminium Range**

## TOBIN JUNCTION BOXES - ALUMINIUM - IP66


Part No.	Height mm	Width mm	Depth mm	Type/Model	Mounting Plate
GW76261	91	91	54	Painted Die Cast Junc Box	
GW76262	103	128	57	Painted Die Cast Junc Box	
GW76263	130	155	58	Painted Die Cast Junc Box	
GW76264	156	178	75	Painted Die Cast Junc Box	
GW76265	202	239	85	Painted Die Cast Junc Box	
GW76266	244	294	114	Painted Die Cast Junc Box	
GW76267	298	392	144	Painted Die Cast Junc Box	



**GW76263**

## BOXCO TERMINAL BOXES - ABS IP66

Part No.	Description
BC-AG-4P	Terminal Box with 4 Centre Mounted Terminals
BC-AG-6P	Terminal Box with 6 Centre Mounted Terminals
BC-AG-6PT	Terminal Box with 6 Side Mounted 2 Level Double Terminals
BC-AG-10P	Terminal Box with 10 Centre Mounted Terminals
BC-AG-15P	Terminal Box with 15 Centre Mounted Terminals
BC-AG-20P	Terminal Box with 20 Centre Mounted Terminals
BC-AG-20PT	Terminal Box with 20 Side Mounted 2 Level Double Terminals



**BC-AG-6P**

## BOXCO TERMINAL BOXES - ALUMINIUM IP66

Part No.	Description
BC-AL-6P	Terminal Box with 6 Centre Mounted Terminals
BC-AL-10P	Terminal Box with 10 Side Mounted 2 Level Double Terminals
BC-AL-15P	Terminal Box with 15 Centre Mounted Terminals
BC-AL-20P	Terminal Box with 20 Centre Mounted Terminals

## TOBIN ENCLOSURES - TERMINAL BOXES - MILD STEEL - IP66

Part No.	Height mm	Width mm	Depth mm	Type/Model	Mounting Plate
TL-15158	150	150	80	Powdered Coated RAL7032	
TL-20158	200	150	80	Powdered Coated RAL7032	
TL-25158	250	150	80	Powdered Coated RAL7032	
TL-30158	300	150	80	Powdered Coated RAL7032	
TL-35158	350	150	80	Powdered Coated RAL7032	
TL-40158	400	150	80	Powdered Coated RAL7032	
TL-50158	500	150	80	Powdered Coated RAL7032	
TL-30208	300	200	80	Powdered Coated RAL7032	
TL-40208	400	200	80	Powdered Coated RAL7032	
TL-151512	150	150	120	Powdered Coated RAL7032	
TL-201512	200	150	120	Powdered Coated RAL7032	
TL-301512	300	150	120	Powdered Coated RAL7032	
TL-202012	200	200	120	Powdered Coated RAL7032	
TL-302012	300	200	120	Powdered Coated RAL7032	
TL-402012	400	200	120	Powdered Coated RAL7032	
TL-502012	500	200	120	Powdered Coated RAL7032	
TL-602012	600	200	120	Powdered Coated RAL7032	
TL-702012	700	200	120	Powdered Coated RAL7032	
TL-802012	800	200	120	Powdered Coated RAL7032	
TL-303012	300	300	120	Powdered Coated RAL7032	
TL-403012	400	300	120	Powdered Coated RAL7032	
TL-503012	500	300	120	Powdered Coated RAL7032	
TL-603012	600	300	120	Powdered Coated RAL7032	
TL-703012	700	300	120	Powdered Coated RAL7032	
TL-404012	400	400	120	Powdered Coated RAL7032	
TL-604012	600	400	120	Powdered Coated RAL7032	
TL-804012	800	400	120	Powdered Coated RAL7032	



TL-151520



TL-20158

## TOBIN ENCLOSURES - TERMINAL BOXES - STAINLESS STEEL

Part No.	Height mm	Width mm	Depth mm	Type/Model	Mounting Plate
CTX151512	150	150	120	316 Stainless Steel	included
CTX202012	200	200	120	316 Stainless Steel	included



CTX202012

You want it - we've got it!

# TOBIN

ELECTRICAL COMPONENTS



1. Tobin 2014 Finned Air Heaters
2. Tobin 2013-14 Trade Price List/Catalogue
3. Tobin 2014 Commercial Appliance Spare Parts
4. Tobin 2014 Enclosures Catalogue
5. Tobin Industrial Heating Catalogue
6. Tesco 2014 Element & Spare Parts Catalogue
7. Tobin Floor Outlet Box Catalogue

Tobin - a company you know and trust

All Tobin Catalogues are available online at [www.tobins.com.au](http://www.tobins.com.au)



[www.tobins.com.au](http://www.tobins.com.au)

[www.tescoheatingelements.com.au](http://www.tescoheatingelements.com.au)