

# Light & Sound Products





### LED Indicator Lights

- 240VAC, 24VAC/DC. Available in 12VAC/DC.
- Operational temperature -25° to 55° C.
- Cluster type LED illumination. Red, green, blue, amber, white.
- Life - 60,000hrs plus.
- 22mm and 16mm.
- Insulation resistance > 2 M ohm. IP65



**PL16**



**PL22**

Part no	Description	Current Usage
PL22A/24R	Red pilot light, 24VAC/DC 22mm mounting hole.	16.5mA
PL22A/24G	Green pilot light, 24VAC/DC 22mm mounting hole.	16.5mA
PL22A/24B	Blue pilot light, 24VAC/DC 22mm mounting hole.	16.5mA
PL22A/24A	Amber pilot light, 24VAC/DC 22mm mounting hole.	16.5mA
PL22A/24W	White pilot light, 24VAC/DC 22mm mounting hole.	16.5mA
PL22A/240R	Red pilot light, 240V AC/DC 22mm mounting hole.	16.5mA
PL22A/240G	Green pilot light, 240V AC/DC 22mm mounting hole.	16.5mA
PL22A/240B	Blue pilot light, 240 V AC/DC 22mm mounting hole.	16.5mA
PL22A/240A	Amber pilot light, 240V AC/DC 22mm mounting hole.	16.5mA
PL22A/240W	White pilot light, 240V AC/DC 22mm mounting hole.	16.5mA
PL16/24R	Red pilot light, 24VAC/DC 16mm mounting hole.	16.5mA
PL16/24G	Green pilot light, 24VAC/DC 16mm mounting hole.	16.5mA
PL16/24B	Blue pilot light, 24VAC/DC 16mm mounting hole.	16.5mA
PL16/24A	Amber pilot light, 24VAC/DC 16mm mounting hole.	16.5mA
PL16/24W	White pilot light, 24VAC/DC 16mm mounting hole.	16.5mA
PL16/240R	Red pilot light, 240V AC 16mm mounting hole.	8mA
PL16/240G	Green pilot light, 240V AC 16mm mounting hole.	8mA
PL16/240B	Blue pilot light, 240V AC 16mm mounting hole.	8mA
PL16/240A	Amber pilot light, 240V AC 16mm mounting hole.	8mA
PL16/240W	White pilot light, 240V AC 16mm mounting hole.	8mA



**TN3D2**

Part no	Description	Current Usage
TN2D2RL	Red LED pilot light, 240V AC. 22mm mounting hole, 30mm head size.	16.5mA
TN2D2OL	Amber LED pilot light, 240V AC. 22mm mounting hole, 30mm head size	16.5mA
TN2D2GL	Green LED pilot light, 240V AC. 22mm mounting hole, 30mm head size	16.5mA
TN2D2BLL	Blue LED pilot light, 240V AC. 22mm mounting hole, 30mm head size	16.5mA
TN2D2WLL	White LED pilot light, 240V AC. 22mm mounting hole, 30mm head size	16.5mA
TN2D7RL	Red LED pilot light, 24V AC/DC. 22mm mounting hole, 30mm head size	16.5mA
TN2D7OL	Amber LED pilot light, 24V AC/DC. 22mm mounting hole, 30mm head size	16.5mA
TN2D7GL	Green LED pilot light, 24V AC/DC. 22mm mounting hole, 30mm head size	16.5mA
TN2D7BLL	Blue LED pilot light, 24V AC/DC. 22mm mounting hole, 30mm head size	16.5mA
TN2D7WLL	White LED pilot light, 24V AC/DC. 22mm mounting hole, 30mm head size	16.5mA
TN2D9RL	Red LED pilot light, 12V AC/DC. 22mm mounting hole, 30mm head size	16.5mA
TN2D9OL	Amber LED pilot light, 12V AC/DC. 22mm mounting hole, 30mm head size	16.5mA
TN2D9GL	Green LED pilot light, 12V AC/DC. 22mm mounting hole, 30mm head size	16.5mA
TN2D9BLL	Blue LED pilot light, 12V AC/DC. 22mm mounting hole, 30mm head size	16.5mA
TN2D9WLL	White LED pilot light, 12V AC/DC. 22mm mounting hole, 30mm head size	16.5mA
TN3D2RL	Red LED pilot light, 240V AC/DC. 30mm mounting hole, 35mm head size	16.5mA
TN3S2OL	Amber LED pilot light, 240V AC/DC. 30mm mounting hole, 35mm head size	16.5mA
TN3D2GL	Green LED pilot light, 240V AC/DC. 30mm mounting hole, 35mm head size	16.5mA
TN3D2BLL	Blue LED pilot light, 240V AC/DC. 30mm mounting hole, 35mm head size	16.5mA
TN3D2WLL	White LED pilot light, 240V AC/DC. 30mm mounting hole, 35mm head size	16.5mA

Please contact your distributor for pricing details.

Some items in this range may be indent. Please check before ordering.

# Flashing LED Indicators & Buzzers



## Economy Flashing LED Indicator Lights

- 24VAC/DC or 240VAC.
- Cluster type LED illumination.
- Red, green, blue, amber, white.
- Life: 100,000hrs plus.
- 22mm. IP65

Part no	Description	Current Usage
AD22-22DFR/24	24VAC/DC, red, flashing, 22mm mounting hole	18.4mA
AD22-22DFG/24	24VAC/DC, green, flashing, 22mm mounting hole	18.4mA
AD22-22DFB/24	24VAC/DC, blue, flashing, 22mm mounting hole	18.4mA
AD22-22DFA/24	24VAC/DC, amber, flashing, 22mm mounting hole	18.4mA
AD22-22DFW/24	24VAC/DC, white, flashing, 22mm mounting hole	18.4mA
AD22-22DFR/230	240V AC, red, flashing, 22mm mounting hole	21.1mA
AD22-22DFG/230	240V AC, green, flashing, 22mm mounting hole	21.1mA
AD22-22DFB/230	240V AC, blue, flashing, 22mm mounting hole	21.1mA
AD22-22DFA/230	240V AC, amber, flashing, 22mm mounting hole	21.1mA
AD22-22DFW/230	240V AC, white, flashing, 22mm mounting hole	21.1mA



AD22-22DFR/230



## LED Indicator Lights Flashing & Continuous with Buzzer

- Available in red, green, yellow & black.
- Complete with built in auxiliary contact block

Part no	Description	Current Usage
TS2BI2	22mm Intermittent Buzzer - 240V AC	25mA
TS2BI7	22mm Intermittent Buzzer - 24V AC/DC	30mA
TS2BI9	22mm Intermittent Buzzer - 12V AC/DC	40mA
TS2BIL2	22mm Flashing LED Pilot Light with Buzzer - 240V AC	25mA
TS2BIL7	22mm Flashing LED Pilot Light with Buzzer- 24V AC/DC	25mA
TS2BIL9	22mm Flashing LED Pilot Light with Buzzer- 12V AC/DC	35mA
TS2BC2	22mm Continuous Buzzer, 240VAC	25mA
TS2BC7	22mm Continuous Buzzer, 24V AC/DC	30mA
TS2BC9	22mm Continuous Buzzer, 12V AC/DC	40mA
TS2BCL2	22mm Continuous Light with Buzzer, 240VAC	25mA
TS2BCL7	22mm Continuous Light with Buzzer, 24V AC/DC	25mA
TS2BCL9	22mm Continuous Light with Buzzer, 12V AC/DC	45mA

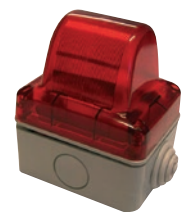


TS2BIL2

## Surface Mount Indicator Lights

- 240V
- IP55
- 15W max continuous

Part no	Description	Current Usage
GW27415	240V Red Indicator light, requires E14 lamp	10W
GW27416	240V Green Indicator light, requires E14 lamp	10W
GW27417	240V Amber Indicator light, requires E14 lamp	10W
GW27418	240V Clear Indicator light, requires E14 lamp	10W
GW27419	240V Blue Indicator light, requires E14 lamp	10W



GW27415



## Strobe Lights

- Weatherproof construction IP44.
- Strobe lights use powerful Xenon tube which ensures high visibility.
- Available in Red, Amber, Green and Blue



SYF130-A



SYF130-BL



SYF130-R



SYF130-G

Part no	Description	Current Usage
SYF75D-12	12VDC Strobe Light. 80 x 75mm 76fpm	2.4mA
SYF75D-24	24VDC Strobe Light. 80 x 75mm 76fpm	100mA
SYF75D-240	240V Strobe Light 80 x 75mm 70fpm	15.3mA
SYF150-240	240V Strobe light 147 x 120mm. 70fpm	18mA
SYF205	12-48VDC Multi Voltage Double Flash. 140 x 115mm. 60 double fpm	8.1mA
JBS-100-240	240V Strobe Light 100 x 75mm 70 fpm	16mA
JBS 100-12	12 VDC Strobe Light 100 x 75mm 76 fpm	2.3mA
JBS 100-24	24VDC Strobe Light 100 x 75mm 76 fpm	98mA
SYF151D	12-100VDC, 30-60VAC Strobe. 147 x 120mm 75 fpm	120mA
SYF130-12	12VDC Strobe Light 128 x 95mm 76fpm	8mA
SYF130-24	24VDC Strobe Light 128 x 95mm 76fpm	97mA
SYF130-240	240V Strobe Light 128 x 95mm 70fpm	16.6mA
SYF150-240	240V Strobe Light 147 x 120mm 70 fpm	15mA
DL152	12-30VDC Multi Voltage Double Flash 147 x 120mm	8.5mA

## Revolving Warning Lights

- Weatherproof construction IP44.
- Available in Red, Amber, Green and Blue

Part no	Description	Current Usage
DL80-12	12VDC Revolving Warning Light 140rpm	9mA
DL80-24	24VDC Revolving Warning Light 140rpm	5mA
DL190-12	12VDC Revolving Warning Light 140rpm	10mA
DL190-24	24VDC Revolving Warning Light 140rpm	98mA
TRM - 12	12VDC Revolving Warning Light 0.70A Current 12V 8W Bulb	12mA
TRM - 24	24VDC Revolving Warning Light 0.34A Current 24V 10W Bulb	330mA
TRM - 24A	24VAC Revolving Warning Light 0.34A Current 24V 10W Bulb	350mA
TRM - 110	110VAC Revolving Warning Light 0.07A Current 12V 8W Bulb	25mA
TRM - 240	240V Revolving Warning Light 0.04A Current 12V 8W Bulb	30.3mA
RB190-240	240V Revolving Warning Light 140rpm	236mA



DL152



DL80



DL190



RB190



TRM

Please contact your distributor for pricing details.  
Some items in this range may be indent. Please check before ordering.

# Warning Lights & Pilot Lamps

## Tend LED Warning Lights

- Available in Amber, Blue, Green and Red.
- Available in voltages 12V AC/DC, 24V AC/DC, 240 VAC

Part No.	Description	Current Usage
TWLW-08L9	80mm LED Rotating Warning Light 12V AC/DC	100mA
TWLW-10L9	100mm LED Rotating Warning Light 12V AC/DC	100mA
TWLW-12L9	120mm LED Rotating Warning Light 12V AC/DC	100mA
TWLW-16L9	160mm LED Rotating Warning Light 12V AC/DC	200mA
TWLW-18L9	180mm LED Rotating Warning Light 12V AC/DC	200mA
TWLW-08L7	80mm LED Rotating Warning Light 24V AC/DC	100mA
TWLW-10L7	100mm LED Rotating Warning Light 24V AC/DC	100mA
TWLW-12L7	120mm LED Rotating Warning Light 24V AC/DC	100mA
TWLW-16L7	160mm LED Rotating Warning Light 24V AC/DC	150mA
TWLW-18L7	180mm LED Rotating Warning Light 24V AC/DC	150mA
TWLW-08L2	80mm LED Rotating Warning Light 240 VAC	30mA
TWLW-10L2	100mm LED Rotating Warning Light 240 VAC	30mA
TWLW-12L2	120mm LED Rotating Warning Light 240 VAC	30mA
TWLW-16L2	160mm LED Rotating Warning Light 240 VAC	30mA
TWLW-18L2	180mm LED Rotating Warning Light 240 VAC	30mA



TWLW-08



TWLW-10

## Pilot Lamps - Flashing & Non-Flashing

- 30mm Panel Mount
- Available in Amber, Blue, Green & Red

Part no	Description	Current Usage
TPLF-301	110V Pilot Light with E12 bulb, flashing	16.5mA
TPLF-302	240V Pilot Light with E12 bulb, flashing	16.5mA
TPLF-307	24V Pilot Light with E12 bulb, flashing	16.5mA
TPL-301	110V Pilot Light with E12 bulb, non-flashing	16.5mA
TPL-302	240V Pilot Light with E12 bulb, non-flashing	16.5mA
TPL-307	24V Pilot Light with E12 bulb, non-flashing	16.5mA



TPL-301-A

## Tend TPN Series Indicators

Available in red, green, amber and clear

Part no	Description	Current Usage
TPN112	10MM diameter 152 leads 240V	2mA
TPN114	10MM diameter 152 leads 415V	3mA
TPN117	10MM diameter 152 leads 24V	50mA



TPN INDICATORS

## Tend HK201 - 240V Indicators

Available in red, green, amber and clear

Part no	Description	Current Usage
HK-201	8mm diameter - c/w lead (8mm dia. Chrome treaded barrell)	2mA
HK-402	12mm diameter - c/w lead (9.3mm dia., treaded barrell, 190mm leads)	2mA
HK-405	10mm diameter - c/w lead (9.3mm dia., treaded barrell, 190mm leads)	2mA
HK-402NL	12mm diameter - no lead (9.3mm dia., treaded barrell, 190mm leads)	2mA



HK-201 HK-402 HK-405



## Tower Lights

- Plastic construction.
- The internal spring suspension avoids damage to the bulb due to machine's vibration.
- Audio alarm buzzes at 90dB/30cm.
- 50mm diameter. LED illumination.
- Pole or base mounted.
- L (TPTL....) unit is continuous, S (TPTS....) unit is continuous and flashing.
- Light colours: R = Red, O = Orange, G = Green, B = Blue, W = White

### Base Mount Type

Part no	Description	Current Usage
TPWL5-L71R	24V Base Mount Tower Light - R	17mA
TPWL5-L72RG	24V Base Mount Tower Light - R & G	32mA
TPWL5-L73ROG	24V Base Mount Tower Light - R, O & G	46mA
TPWL5-L74ROGB	24V Base Mount Tower Light - R, O, G & B	62mA
TPWL5-L75ROGBW	24V Base Mount Tower Light - R, O, G, B & W	78mA
TPWL5-L21R	240V Base Mount Tower Light - R	20mA
TPWL5-L22RG	240V Base Mount Tower Light - R & G	40mA
TPWL5-L23ROG	240V Base Mount Tower Light - R, O & G	60mA
TPWL5-L24ROGW	240V Base Mount Tower Light - R, O, G & B	80mA
TPWL5-L25ROGBW	240V Base Mount Tower Light - R, O, G, B & W	100mA



TPWL5-L72RG

### Base Mount Type with Buzzer

Part no	Description	Current Usage
TPWS5-L71R	24V Pole Mount Tower Light with Buzzer - R	38.8mA
TPWS5-L72RG	24V Pole Mount Tower Light with Buzzer - R & G	49mA
TPWS5-L73ROG	24V Pole Mount Tower Light with Buzzer - R, O & G	58mA
TPWS5-L74ROGB	24V Pole Mount Tower Light with Buzzer - R, O, G & B	74mA
TPWS5-L75ROGBW	24V Pole Mount Tower Light with Buzzer - R, O, G, B & W	92.7mA



TPWS5-L73ROG

### Pole Mount Type

Part no	Description	Current Usage
TPTL5-L71R	24V Pole Mount Tower Light - R	17mA
TPTL5-L72RG	24V Pole Mount Tower Light - R & G	32mA
TPTL5-L73ROG	24V Pole Mount Tower Light - R, O & G	46mA
TPTL5-L74ROGB	24V Pole Mount Tower Light - R, O, G & B	62mA
TPTL5-L75ROGBW	24V Pole Mount Tower Light - R, O, G, B & W	78mA
TPTL5-L21R	240V Pole Mount Tower Light - R	20mA
TPTL5-L22RG	240V Pole Mount Tower Light - R & G	40mA
TPTL5-L23ROG	240V Pole Mount Tower Light - R, O & G	60mA
TPTL5-L24ROGB	240V Pole Mount Tower Light - R, O, G & B	80mA
TPTL5-L25ROGBW	240V Pole Mount Tower Light - R, O, G, B & W	100mA



TPTL5-L73ROG

### Pole Mount Type with Buzzer

Part no	Description	Current Usage
TPTS5-L71R	24V Pole Mount Tower Light with Buzzer - R	38.8mA
TPTS5-L72RG	24V Pole Mount Tower Light with Buzzer - R & G	49mA
TPTS5-L73ROG	24V Pole Mount Tower Light with Buzzer - R, O & G	58mA
TPTS5-L74ROGB	24V Pole Mount Tower Light with Buzzer - R, O, G & B	74mA
TPTS5-L75ROGBW	24V Pole Mount Tower Light with Buzzer - R, O, G, B & W	92.7mA

# Sirens, Bells & Buzzers



## Surface Mount Buzzer

Part no	Description	Current Usage
<b>TBN-12</b>	12VAC Surface Mount Buzzer 85dB	1.2A
<b>TBN-12D</b>	12VDC Surface Mount Buzzer 85dB	60mA
<b>TBN-220</b>	240V Surface Mount Buzzer 85dB	70mA
<b>TBN-24</b>	24VAC Surface Mount Buzzer 85dB	685mA
<b>TBN-24D</b>	24VDC Surface Mount Buzzer 85dB	300mA



**TBN-12**

## Electric Bell

Part no	Description	Current Usage
<b>4BL-24</b>	24VAC 4" Electric Bell 95dB	222mA
<b>4BL-24D</b>	24VDC 4" Electric Bell 95dB	180mA
<b>4BL-220</b>	240V 4" Electric Bell 95dB	12.5mA
<b>6BL-12D</b>	12VDC 6" Electric Bell 95dB	400mA
<b>6BL-24</b>	24VAC 6" Electric Bell 95dB	208mA
<b>6BL-24D</b>	24VDC 6" Electric Bell 95dB	185mA
<b>6BL-240</b>	240V 6" Electric Bell 95dB	37mA
<b>8BL-24D</b>	24VDC 8" Electric Bell 95dB	200mA
<b>8BL-240</b>	240V 8" Electric Bell 95dB	37mA
<b>10BL-24D</b>	24VDC 10" Electric Bell 95dB	210mA
<b>10BL-240</b>	240V 10" Electric Bell 95dB	220mA



**6BL-240**

## Flush Mount Buzzer

Part no	Description	Current Usage
<b>TBY-24</b>	24VAC Flush Mount Buzzer 85dB	500mA
<b>TBY-24D</b>	24VDC Flush Mount Buzzer 85dB	50mA
<b>TBY-220</b>	240V Flush Mount Buzzer 85dB	97.5mA



**TBY-302**

## Panel Mount Buzzer

Part no	Description	Current Usage
<b>TBY-302</b>	240V Panel Mount Buzzer 75dB	50mA
<b>TBY-312D</b>	12VDC Panel Mount Buzzer 75dB	10mA
<b>TBY-324</b>	24 VAC Panel Mount Buzzer 75dB	595mA
<b>TBY-324D</b>	24 VDC Panel Mount Buzzer 75dB	15mA

## Plastic Siren

Part no	Description	Current Usage
<b>TSA-24D</b>	24DC Plastic Surface Mount Siren 105dB	25mA
<b>TSA-220</b>	240V Plastic Surface Mount Siren 105dB	50mA



**TSA-220**



**540501FULL0389X**



**570011FULL-0054**



**FD-108R**



**FD-115D**



**MB-FS79CV**



**JS-44**

## Surface Mount Buzzer

Part no	Description	Current Usage
<b>540501FULL0389X</b>	9-28VDC Plastic Surface Mount Siren. 95-116dB. 26 Tones IP65	Pls.Enquire
<b>570011FULL-0054</b>	9-28VDC Plastic Surface Mount Siren. 99-101dB. 28 Tones IP65	Pls.Enquire

## Piezo Buzzer

Part no	Description	Current Usage
<b>MW09301S</b>	240V Piezo Panel Mount Buzzer 95dB	12mA
<b>GS261</b>	12VDC Piezo Panel Mount Buzzer 95dB pulse rated	15mA
<b>GS262</b>	240V Piezo Panel Mount Buzzer 95dB pulse rated	12mA

## Fire & Warning Alarms

Part no	Description	Current Usage
<b>FD-108R</b>	Fire Call Point - Red. NO+NC Contacts (86 x 86 x 53mm)	
<b>MPS-83</b>	Strobe Sounder - Red 24VDC,300mA, 110db (180 x 140 x 60mm)	300mA
<b>FD-115D</b>	Sounder Alarm - Red 24Vdc,150mA, 110db (86 x 86 x 75mm)	150mA
<b>MB-F100</b>	Fire Bell - Red 24VDC, 30mA, 103db (81 x 81 x 30mm)	30mA
<b>MB-FS2</b>	LED Sounder - Red 24VDC, 30mA, 103db (81 x 81 x 30mm)	30mA
<b>MB-FS79CV</b>	LED Ceiling Mount Sounder - Red 24VDC, 30mA, 103db	30mA
<b>JS-44</b>	Black Siren with 100mm Diameter, 240V AC	1A

Please contact your local distributor for pricing and any technical details or requirements.



2C Brunner Road, Chullora NSW 2190  
 Ph 1300 TOBINS, (02) 8713 5200 Fax (02) 9790 5211  
 Email [sales@tobins.com.au](mailto:sales@tobins.com.au)  
[www.tobins.com.au](http://www.tobins.com.au)