

SRR SOLID STATE DIMMER

Block type variable voltage output device.
Complete with external potentiometer.
Control voltage 25-250V.
Switching voltage 250V.
Size 60 x 45 x 25mm
SRR2510 - 10A
SRR2525 - 25A
SRR2540 -



SRA SOLID STATE RELAY

Size 60 x 45 x 25mm
SRA2510N - 10A, 250VAC input
SRA2425N - 25A, 3-32VAC input
SRA2525N - 25A, 250VAC input
SRA2540N - 40A, 250VAC input



SRD SOLID STATE RELAY

Size 60 x 45 x 25mm
SRD2525N - 25A, 3-32VDC input
SRD2540N - 40A, 3-32VDC input



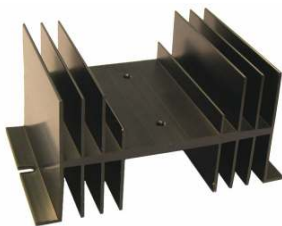
ZG3 SOLID STATE RELAY

Size 57 x 44 30mm
ZG3NA-25AA - 25A, 250VAC input
ZG3NA-40AA - 40A, 250VAC input
ZG3NA-25AD - 25A, 3-32VDC input
ZG3NA-40AD - 40A, 3-32VDC input



TSSR01-1P (HS1)

125mm x 80mm



TSSR01-2P (HS-2)

125mm x 120mm



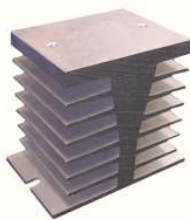
TSSR01-3P (HS-3)

125mm x 150mm



HS-A

Aluminium Heat Sink
W 65mm x L 50mm x H 70mm
Takes single solid state relay



HS-B

Aluminium Heat Sink
W 65mm x L 100mm x H 70mm
Takes two solid state relays



HS-C

Aluminium Heat Sink
W 65mm x L 150mm x H 70mm
Takes three solid state relays

